



TEL:4006-871-227 Web:www.ybio.net Email:shybio@126.com

YBC652Hu01 100ug

Recombinant Nuclear Autoantigenic Sperm Protein, Histone Binding (NASP)

Organism Species: Homo sapiens (Human)

Instruction manual

FOR IN VITRO USE AND RESEARCH USE ONLY

NOT FOR USE IN CLINICAL DIAGNOSTIC PROCEDURES

10th Edition (Revised in Jan, 2014)

[PROPERTIES]

Residues: Met3~Asn223

Tags: Two N-terminal Tags, His-tag and T7-tag

Accession: P49321

Host: *E. coli*

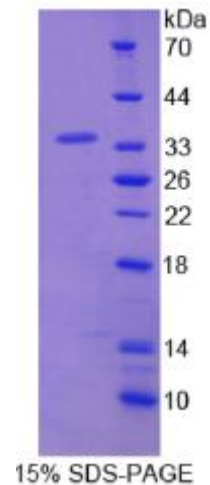
Subcellular Location: Cytoplasm, nucleus. Purity:

>90%

Endotoxin Level: <1.0EU per 1 μ g (determined by the LAL method).

Formulation: Supplied as lyophilized form in 20mM Tris, 150mM NaCl, pH8.0, containing 1mM EDTA, 1mM DTT, 0.01% sarcosyl, 5% trehalose, and preservative.

Predicted isoelectric point: 4.2



The possible reasons that the actual band size differs from the predicted are as follows:

Predicted Molecular Mass: 27.6kDa

Accurate Molecular Mass: 35kDa as determined by SDS-PAGE reducing conditions. Applications: SDS-PAGE; WB; ELISA; IP.

(May be suitable for use in other assays to be determined by the end user.)

Note:

1. Splice variants: Alternative splicing may create different sized proteins from the same gene.



TEL:4006-871-227 Web:www.ybio.net Email:shybio@126.com

2. Relative charge: The composition of amino acids may affects the charge of the protein.
3. Post-translational modification: Phosphorylation, glycosylation, methylation etc.
4. Post-translation cleavage: Many proteins are synthesized as pro-proteins, and then cleaved to give the active form.
5. Polymerization of the target protein: Dimerization, multimerization etc.



TEL:4006-871-227 Web:www.ybio.net

Email:shybio@126.com

[USAGE]

Reconstitute in sterile ddH₂O.

[STORAGE AND STABILITY]

Storage: Avoid repeated freeze/thaw cycles.

Store at 2-8°C for one month.

Aliquot and store at -80°C for 12 months.

Stability Test: The thermal stability is described by the loss rate of the target protein. The loss rate was determined by accelerated thermal degradation test, that is, incubate the protein at 37°C for 48h, and no obvious degradation and precipitation were observed. (Referring from China Biological Products Standard, which was calculated by the Arrhenius equation.) The loss of this protein is less than 5% within the expiration date under appropriate storage condition.

[SEQUENCES]

The sequence of the target protein is listed below.

MESTATAA VAAELVSADK IEDVPAPSTS ADKVESLDVD SEAKLLGLG QKHLVMGDIP
AAVNAFQEAASLLGKKYGET ANECGEAFFF YGKSLELAR MENGVLGNAL EGVHVEEEEG
EKTEDESLVE NNDNIDEEAR EELREQVYDA MGEKEEAKKT EDKSLAKPET DKEQDSEMEK
GGREDMDISK SAEPPQEKVD LTLDWLTETS EEAKGGAPE GPN