



TEL:4006-871-227 Web:www.ybio.net Email:shybio@126.com

YBB787Mu01 100ug

Recombinant Tumor Associated Calcium Signal Transducer 2 (TACSTD2)

Organism Species: *Mus musculus* (Mouse)

*Instruction
manual*

FOR IN VITRO USE AND RESEARCH USE ONLY

NOT FOR USE IN CLINICAL DIAGNOSTIC PROCEDURES

10th Edition (Revised in Jan, 2014)

[PROPERTIES]

Residues: Arg22~Gln263

Tags: Two N-terminal Tags, His-tag and T7-tag

Accession: Q9WV91

Host: *E. coli*

Subcellular Location: Endoplasmic reticulum
membrane. Single-pass type I membrane protein.
Golgi apparatus, trans-Golgi network membrane.

Purity: >95%

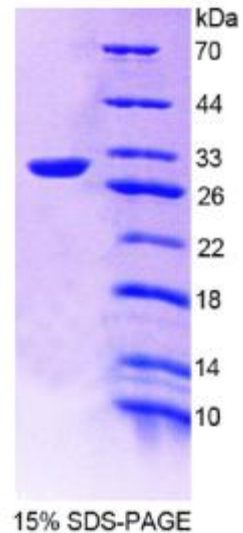
Endotoxin Level: <1.0EU per 1 μ g (determined by the
LAL method).

Formulation: Supplied as lyophilized form in 20ml
Tris, 150mM NaCl, pH8.0, containing 1mM EDTA, 1mM
DTT, 0.01% sarcosyl, 5% trehalose, and preservative.

Predicted isoelectric point: 5.8

Predicted Molecular Mass: 30.5kDa

Applications: SDS-PAGE; WB; ELISA; IP.





TEL:4006-871-227 Web:www.ybio.net Email:shybio@126.com

(May be suitable for use in other assays to be determined by the end user.)

[USAGE]

Reconstitute in sterile ddH₂O.



[STORAGE AND STABILITY]

Storage: Avoid repeated freeze/thaw cycles.

Store at 2-8°C for one month.

Aliquot and store at -80°C for 12 months.

Stability Test: The thermal stability is described by the loss rate of the target protein. The loss rate was determined by accelerated thermal degradation test, that is, incubate the protein at 37°C for 48h, and no obvious degradation and precipitation were observed. (Referring from China Biological Products Standard, which was calculated by the Arrhenius equation.) The loss of this protein is less than 5% within the expiration date under appropriate storage condition.

[SEQUENCES]

The sequence of the target protein is listed below.

RVVRVPAGT LVRVVGTELV IPCNVSDYDG PSEQNFDWSF SSSGSSFVEL ASTWEVGFP
QLYRERLQRG DILLRRTAND AVELHIKNVQ PSDQGHYKCS TPSTDATVQG NYEDTVQVKV
LADALVVGPS SRPPPGLSLR EGEPFELRCI ASTTSPLHTH LALRWELHRG PVHRSILALS
H E G R F H P G P G Y E Q R Y H S G D V R L D T V G S D A Y R L S V A R A L S A D Q G S Y R C V V S
EWITEQGSWQ EIQ