

YB92077Mu01

Laminin Alpha 4 (LAMa4)

Organism: Mus musculus (Mouse)

Instruction manual

FOR IN VITRO USE AND RESEARCH USE ONLY

NOT FOR USE IN CLINICAL DIAGNOSTIC  
PROCEDURES

5th Edition (Revised in January, 2013)

**[ DESCRIPTION ]**

Protein Names: Laminin Alpha 4

Synonyms: LAMa4

Species: Mouse

Size: 100+g

Source: Escherichia coli-derived

Subcellular Location: Secreted, extracellular space,  
extracellular matrix, basement membrane.**[ PROPERTIES ]**Residues: Gln102~Thr234 (Accession # P97927),  
with N-terminal His-Tag.Grade & Purity: >95%, 18kDa as determined by SDS-  
PAGE reducing conditions.Formulation: Supplied as lyophilized form in PBS, pH  
7.4, containing 5% sucrose, 0.01% sarcosyl.Endotoxin Level: <1.0 EU per 1 $\mu$ g (determined by the  
LAL method).

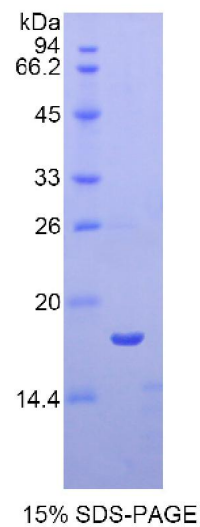
Applications: SDS-PAGE; WB; ELISA; IP.

(May be suitable for use in other assays to be determined by the end user.)

Predicted Molecular Mass: 16.2kDa

Predicted isoelectric point: 7.0

Mouse LAMa4





TEL:4006-871-227 Web:www.ybio.net Email:shybio@126.com

### [ PREPARATION ]

Reconstitute in sterile PBS, pH7.2-pH7.4.

### [ STORAGE AND STABILITY ]

Storage: Avoid repeated freeze/thaw cycles.

Store at 2-8°C for one month.

Aliquot and store at -80°C for 12 months.

Stability Test: The thermal stability is described by the loss rate of the target protein. The loss rate was determined by accelerated thermal degradation test, that is, incubate the protein at 37°C for 48h, and no obvious degradation and precipitation were observed. (Referring from China Biological Products Standard, which was calculated by the Arrhenius equation.) The loss of this protein is less than 5% within the expiration date under appropriate storage condition.

### [ SEQUENCES ]

The target protein is fused with N-terminal His-Tag, its sequence is listed below.

MGHHHHHSGSEF- QRNTTGEHC EKCLDGYIGD SIRGTPRFCQ PCPCPLPHLA  
NFAESCYRKN GAVRCICKEN YVGPNCERCA PGYYGNPLLI GSTCKKCDCS GNSDPNLIFE  
DCDEITGQCR NCLRNTTGFK CERCAPGYYG DART