



TEL:4006-871-227 Web:www.ybio.net Email:shybio@126.com

YBB317Hu01 50µg
Recombinant Perforin 1 (PRF1)
Organism Species: Homo sapiens (Human)
Instruction manual

FOR IN VITRO USE AND RESEARCH USE ONLY
NOT FOR USE IN CLINICAL DIAGNOSTIC PROCEDURES

11th Edition (Revised in May, 2016)

[PROPERTIES]

Source: Prokaryotic expression.

Host: *E. coli*

Residues: Lys32~Phe316

Tags: Two N-terminal Tags, His-tag and GST-tag

Homology: Mouse 68%, rat 69%

Tissue Specificity: Spleen, liver, lung.

Subcellular Location: Cytoplasmic granule lumen. Secreted. Cell membrane;
Multi-pass membrane protein. Endosome lumen.

Purity: >95%

Endotoxin Level: <1.0EU per 1µg (determined by the LAL method).

Traits: Freeze-dried powder

Buffer formulation: 20mM Tris, 150mM NaCl, pH8.0, containing 1mM EDTA,
1mM DTT, 0.01% sarcosyl, 5%Trehalose and Proclin300.

Original Concentration: 200ug/mL

Applications: SDS-PAGE; WB; ELISA; IP; CoIP; Reporter Assays; Purification;
Amine Reactive Labeling.

(May be suitable for use in other assays to be determined by the end user.)

Predicted isoelectric point: 7.0

Predicted Molecular Mass: 63.4kDa



TEL:4006-871-227 Web:www.ybio.net Email:shybio@126.com

Accurate Molecular Mass: 62kDa as determined by SDS-PAGE reducing conditions.



TEL:4006-871-227 Web:www.ybio.net

Email:shybio@126.com

[USAGE]

Reconstitute in 20mM Tris, 150mM NaCl (pH8.0) to a concentration of 0.1-1.0 mg/mL. Do not vortex.

[STORAGE AND STABILITY]

Storage: Avoid repeated freeze/thaw cycles.

Store at 2-8°C for one month.

Aliquot and store at -80°C for 12 months.

Stability Test: The thermal stability is described by the loss rate. The loss rate was determined by accelerated thermal degradation test, that is, incubate the protein at 37°C for 48h, and no obvious degradation and precipitation were observed. The loss rate is less than 5% within the expiration date under appropriate storage condition.

[SEQUENCE]

KRSHKFVPG AWLAGEGVDV
TSLRRSGSFP VDTQRFLRPD GTCTLCENAL QEGTLQRLPL ALTNWRAQGS
GCQRHVTRAK VSSTEAVARD AARSIRNDWK VGLDVT PKPT SNVHVSVAGS
HSQAANFAAQ KTHQDQYSFS TDTVECRFYS FHVVHTPPLH PDFKRALGDL
PHHFNASTQP AYLRLLISNYG THFIRAVELG GRISALTALR TCELALEGLT
DNEVEDCLTV EAQVNIGIHG SISAEAKACE EKKKKHKMTA SFHQTYRERH
SEVVGGHHTS INDLLF

[IDENTIFICATION]

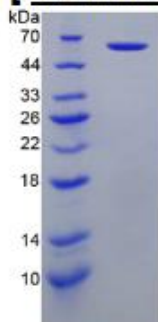


Figure 1. SDS-PAGE



TEL:4006-871-227 Web:www.ybio.net

Email:shybio@126.com