



TEL:4006-871-227 Web:www.ybio.net Email:shybio@126.com

YBG621Mu01 50 $\mu$ g

Recombinant Palmitoyl Protein Thioesterase 1 (PPT1)

Organism Species: *Mus musculus* (Mouse)

*Instruction manual*

FOR IN VITRO USE AND RESEARCH USE ONLY

NOT FOR USE IN CLINICAL DIAGNOSTIC PROCEDURES

10th Edition (Revised in Jan, 2014)

## [ PROPERTIES ]

Residues: Asp28~Lys279

Tags: Two N-terminal Tags, His-tag and T7-tag

Accession: 088531

Host: *E. coli*

Subcellular Location: Lysosome.

Purity: >95%

Endotoxin Level: <1.0EU per 1 $\mu$ g

(determined by the LAL method).

Formulation: Supplied as lyophilized form in 20mM Tris,

150mM NaCl, pH8.0, containing 1mM EDTA, 1mM DTT,

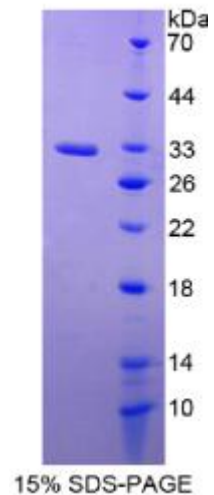
0.01% sarcosyl, 5% trehalose, and preservative.

Predicted isoelectric point: 8.1

Predicted Molecular Mass: 32.3kDa

Applications: SDS-PAGE; WB; ELISA; IP.

(May be suitable for use in other assays to be determined by the end user.)



## [ USAGE ]



TEL:4006-  
871-227 Web:www.ybio.net  
Email:shybio@126.com

**Reconstitute in sterile ddH<sub>2</sub>O.**



## [ STORAGE AND STABILITY ]

Storage: Avoid repeated freeze/thaw cycles.

Store at 2-8°C for one month.

Aliquot and store at -80°C for 12 months.

Stability Test: The thermal stability is described by the loss rate of the target protein. The loss rate was determined by accelerated thermal degradation test, that is, incubate the protein at 37°C for 48h, and no obvious degradation and precipitation were observed. (Referring from China Biological Products Standard, which was calculated by the Arrhenius equation.) The loss of this protein is less than 5% within the expiration date under appropriate storage condition.

## [ SEQUENCES ]

The sequence of the target protein is listed below.

DPP SPP PLV IWH G MG D SCC N PMS MG VI KKMV EK EIPG IY VLS L EIG KN MME DV  
ENSFFLN NVN V QNMVCQILE KDPK LQQGYN AIGFSQGGQF LRAVAQRCP T PPM T LISVG  
GQH QGVFGLP RCPGESSHIC DFIRKSLNAG AYSKLVQERL VQAQYWH DPI KESVYRNYSI  
FLADINQERC VNESYKKNLM ALKKFVMVKF FNDSIVDPVD SEWFGFYRSG QAKETIPLQE  
STLYTEDRLG LKKMDKAGK

## [ REFERENCES ]

1. Salonen T., *et al.* (1998) *Genome Res.* 8:724-730.
2. Zhang Z., *et al.* (1999) *Gene* 231:203-211.
3. Ahtiainen L., *et al.* (2003) *J. Comp. Neurol.* 455:368-377.
4. Bible E., *et al.* (2004) *Neurobiol. Dis.* 16:346-359.