



TEL:4006-871-227 Web:www.ybio.net Email:shybio@126.com

YBB337Hu01 10 μ g
Recombinant Elastin (ELN)
Organism Species: Homo sapiens (Human)
Instruction manual

FOR IN VITRO USE AND RESEARCH USE ONLY
NOT FOR USE IN CLINICAL DIAGNOSTIC PROCEDURES

10th Edition (Revised in Jan, 2014)

[PROPERTIES]

Residues: Gly392~Ala645

Tags: N-terminal His-Tag

Accession: P15502

Host: *E. coli*

**Subcellular Location: Secreted, extracellular space
extracellular matrix.**

Purity: >90%

**Endotoxin Level: <1.0EU per 1 μ g (determined by the
LAL method).**

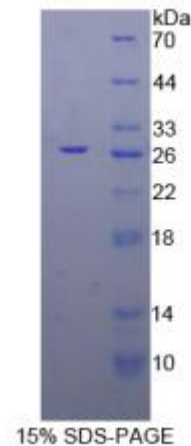
**Formulation: Supplied as lyophilized form in PBS, pH7.4
containing 5% sucrose, 0.01% sarcosyl.**

Predicted isoelectric point: 10.3

Predicted Molecular Mass: 22.9kDa

Accurate Molecular Mass: 28kDa as determined by SDS-PAGE reducing conditions.

Applications: SDS-PAGE; WB; ELISA; IP.



The possible reasons that the actual band size differs from the predicted are as follows:

(May be suitable for use in other assays to be determined by the end user.)

Note:

1. Splice variants: Alternative splicing may create different sized proteins from the same gene.
2. Relative charge: The composition of amino acids may affects the charge of the protein.
3. Post-translational modification: Phosphorylation, glycosylation, methylation etc.
4. Post-translation cleavage: Many proteins are synthesized as pro-proteins, and then cleaved to give the active form.



TEL:4006-871-227 Web:www.ybio.net Email:shybio@126.com

5. Polymerization of the target protein: Dimerization, multimerization etc.



TEL:4006-871-227 Web:www.ybio.net

Email:shybio@126.com

[USAGE]

Reconstitute in sterile PBS, pH7.2-pH7.4.

[STORAGE AND STABILITY]

Storage: Avoid repeated freeze/thaw cycles.

Store at 2-8°C for one month.

Aliquot and store at -80°C for 12 months.

Stability Test: The thermal stability is described by the loss rate of the target protein. The loss rate was determined by accelerated thermal degradation test, that is, incubate the protein at 37°C for 48h, and no obvious degradation and precipitation were observed. (Referring from China Biological Products Standard, which was calculated by the Arrhenius equation.) The loss of this protein is less than 5% within the expiration date under appropriate storage condition.

[SEQUENCES]

The sequence of the target protein is listed below.

GGIPTYGVG AGGFPGFVGV VGGIPGVAGV PGVGGVPGVG GVPGVGISPE AQAAAAAKAA
KYGVGTPAAA AAKAAAKAAQ FGLVPGVGVA PGVGVAPGVG VAPGVGLAPG VGVAPGVGVA
PGVGVAPGIG PGGVAAAAS AAKVAAKAQL RAAAGLGAGI PGLGVGVGVP GLGVGAGVPG
LGVGAGVPGF GAVPGALAAA KAAKYGA AVP GVLGGLGALG GVGIPGGVVG AGPAAAAAAA
KAAAKAAQFG LVGAA

[REFERENCES]

1. Indik Z., *et al.* (1987) Proc. Natl. Acad. Sci. U.S.A. 84:5680-5684.
2. Fazio M.J., *et al.* (1988) J. Invest. Dermatol. 91:458-464.
3. Ota T., *et al.* (2004) Nat. Genet. 36:40-45.
4. Bechtel S., *et al.* (2007) BMC Genomics 8:399-399.