



TEL:4006-871-227 Web:www.ybio.net Email:shybio@126.com

**YBL298Hu01 50µg**  
**Recombinant CD2 Associated Protein (CD2AP)**  
**Organism Species: Homo sapiens (Human)**  
***Instruction manual***

**FOR IN VITRO USE AND RESEARCH USE ONLY**  
**NOT FOR USE IN CLINICAL DIAGNOSTIC PROCEDURES**

9th Edition (Revised in Jul, 2013)

**[ PROPERTIES ]**

**Residues:** Thr149~Glu429 (Accession # Q9Y5K6), with two N-terminal Tags, His-tag and T7-tag.

**Host:** *E. coli*

**Subcellular Location:** Cytoplasm, cytoskeleton. Cell projection, ruffle.

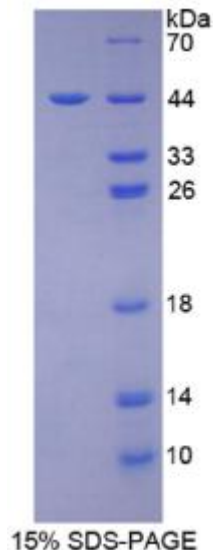
**Purity:** >95%

**Endotoxin Level:** <1.0EU per 1µg (determined by the LAL method).

**Formulation:** Supplied as lyophilized form in 20mM Tris, 500mM NaCl, pH8.0, containing 1mM EDTA, 1mM DTT, 0.01% sarcosyl, 5% trehalose, and preservative.

**Predicted isoelectric point:** 7.8 **Predicted Molecular Mass** 34.5kDa

**Accurate Molecular Mass:** 44kDa as determined by SDS-PAGE reducing



The possible reasons that the actual band size differs from the predicted are as follows:

**conditions. Applications:** SDS-PAGE; WB; ELISA; IP.

**(May be suitable for use in other assays to be determined by the end user.)**

**Note:**

1. Splice variants: Alternative splicing may create different sized proteins from the same gene.
2. Relative charge: The composition of amino acids may affects the charge of the protein.
3. Post-translational modification: Phosphorylation, glycosylation, methylation etc.



TEL:4006-871-227 Web:www.ybio.net Email:shybio@126.com

**4. Post-translation cleavage: Many proteins are synthesized as pro-proteins, and then cleaved to give the active form.**

**5. Polymerization of the target protein: Dimerization, multimerization etc.**



TEL:4006-871-227 Web:www.ybio.net

Email:shybio@126.com

## **[ USAGE ]**

Reconstitute in sterile PBS, pH7.2-pH7.4.

## **[ STORAGE AND STABILITY ]**

Storage: Avoid repeated freeze/thaw cycles.

Store at 2-8°C for one month.

Aliquot and store at -80°C for 12 months.

Stability Test: The thermal stability is described by the loss rate of the target protein. The loss rate was determined by accelerated thermal degradation test, that is, incubate the protein at 37°C for 48h, and no obvious degradation and precipitation were observed. (Referring from China Biological Products Standard, which was calculated by the Arrhenius equation.) The loss of this protein is less than 5% within the expiration date under appropriate storage condition.

## **[ SEQUENCES ]**

The target protein is fused with two N-terminal Tags, His-tag and T7-tag, its sequence is listed below.

MGSSHHHHH SSSLVPRGSH MASMTGGQQM GRGSEF- TL NNKLG LFP SN FVKELEV TDD  
GETHEAQDDS ETVLAGPTSP IPSLGNVSET ASGSVTQPKK IRGIGFGDIF KEGSVKLRTR  
TSSSETEEEKK PEKPLILQSL GPKTQSVEIT KTDTEGKIK A KEYCRTLFAY EGTNEDELTF  
KEGEIHLIS KETGEAGWWR GELNGKEGVF PDNFAVQINE LDKDFPKPKK PPPPAKAPAP  
KPELIAAEKK YFSLKPEEKD EKSTLEQKPS KPAAPQVPPK KPTPPTKASN LLRSSGTVYP  
KRPEKPVPPP PPIAKINGE

## **[ REFERENCES ]**

1. Kirsch K.H., *et al.* (2001) J. Biol. Chem. 276:4957-4963.
2. Kim J.M., *et al.* (2003) Science 300:1298-1300.
3. Monzo P., *et al.* (2005) Mol. Biol. Cell 16:2891-2902.



TEL:4006-871-227 Web:www.ybio.net

Email:shybio@126.com

**4. Konishi H., et al. (2006) J. Biol. Chem. 281:28919-28931.**