



**YBM058Hu01 10 $\mu$ g**

**Recombinant PR Domain Containing Protein 1 (PRDM1)**

**Organism Species: Homo sapiens (Human)**

***Instruction manual***

FOR IN VITRO USE AND RESEARCH USE ONLY

NOT FOR USE IN CLINICAL DIAGNOSTIC PROCEDURES

11th Edition (Revised in May, 2016)

## **[ PROPERTIES ]**

**Source:** Prokaryotic expression.

**Host:** *E. coli*

**Residues:** Leu29~Asp149

**Tags:** N-terminal His-Tag

**Tissue Specificity:** Lung, Pancreas.

**Subcellular Location:** Nucleus. Cytoplasm.

**Purity:** >98%

**Traits:** Freeze-dried powder

**Buffer formulation:** PBS, pH7.4, containing 1mM DTT, 5% trehalose, 0.01% sarcosyl and Proclin300.

**Original Concentration:** 200ug/mL

**Applications:** SDS-PAGE; WB; ELISA; IP; CoIP; ReporterAssays; Purification; Amine Reactive Labeling.

(May be suitable for use in other assays to be determined by the end user.)

**Predicted isoelectric point:** 4.9

**Predicted Molecular Mass:** 15.0kDa

**Accurate Molecular Mass:** 21kDa as determined by SDS-PAGE reducing conditions.

**Phenomenon explanation:**

The possible reasons that the actual band size differs from the predicted are as follows:

1. Splice variants: Alternative splicing may create different sized proteins from the same gene.



TEL:4006-871-227 Web:www.ybio.net Email:shybio@126.com

2. Relative charge: The composition of amino acids may affects the charge of the protein.
3. Post-translational modification: Phosphorylation, glycosylation, methylation etc.
4. Post-translation cleavage: Many proteins are synthesized as pro-proteins, and then cleaved to give the active form.
5. Polymerization of the target protein: Dimerization, multimerization etc.

## [ USAGE ]

Reconstitute in PBS (pH7.4) to a concentration of 0.1-1.0 mg/mL. Do not vortex.

## [ STORAGE AND STABILITY ]

**Storage:** Avoid repeated freeze/thaw cycles.

Store at 2-8°C for one month.

Aliquot and store at -80°C for 12 months.

**Stability Test:** The thermal stability is described by the loss rate. The loss rate was determined by accelerated thermal degradation test, that is, incubate the protein at 37°C for 48h, and no obvious degradation and precipitation were observed. The loss rate is less than 5% within the expiration date under appropriate storage condition.

## [ SEQUENCE ]

```
LA EGTKGTMKMD MEDADMTLWT  
EAEFEEKCTY IVNDHPWDSG ADGGTSVQAE ASLPRNLLFK YATNSEEIVG  
VMSKEYIPKG TRFGPLIGEI YTNDTVPKNA NRKYFWRIYS RGELEHFFID
```

## [ IDENTIFICATION ]

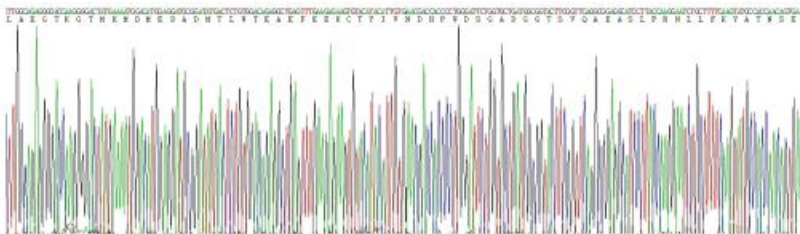


Figure 1. Gene Sequencing (Extract)

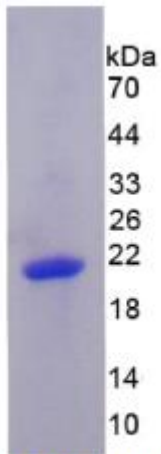


Figure 2. SDS-PAGE



EL:4006-871-  
227 Web:www.ybi  
o.net Email:shy  
bio@126.com