



TEL:4006-871-227 Web:www.ybio.net Email:shybio@126.com

YBA519Mu01 10 μ g

Recombinant Apolipoprotein A1 (APOA1)
Organism Species: *Mus musculus* (Mouse)

*Instruction
manual*

FOR IN VITRO USE AND RESEARCH USE ONLY
NOT FOR USE IN CLINICAL DIAGNOSTIC PROCEDURES

10th Edition (Revised in Jan, 2014)

[PROPERTIES]

Residues: Asp25~Gln264

Tags: Two N-terminal Tags, His-tag and T7-tag

Accession: Q00623

Host: *E. coli*

Subcellular Location: Secreted.

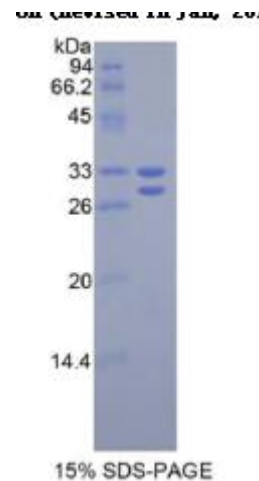
Purity: >90%

Endotoxin Level: <1.0EU per 1 μ g (determined by the LAL method).

Formulation: Supplied as lyophilized form in 20mL Tris, 150mM NaCl, pH8.0, containing 1mM EDTA, 1mM DTI 0.01% sarcosyl, 5% trehalose, and preservative.

Predicted isoelectric point: 6.2

Predicted Molecular Mass:



The possible reasons that the actual band size differs from the predicted are as follows:

31.5kDa

Accurate Molecular Mass: 33&28kDa as determined by SDS-PAGE reducing conditions.

Applications: SDS-PAGE; WB; ELISA; IP.

(May be suitable for use in other assays to be determined by the end user.)



Note:

1. Splice variants: Alternative splicing may create different sized proteins from the same gene.
2. Relative charge: The composition of amino acids may affects the charge of the protein.
3. Post-translational modification: Phosphorylation, glycosylation, methylation etc.
4. Post-translation cleavage: Many proteins are synthesized as pro-proteins, and then cleaved to give the active form.
5. Polymerization of the target protein: Dimerization, multimerization etc.

[USAGE]

Reconstitute in ddH₂O.

[STORAGE AND STABILITY]

Storage: Avoid repeated freeze/thaw cycles.

Store at 2-8°C for one month.

Aliquot and store at -80°C for 12 months.

Stability Test: The thermal stability is described by the loss rate of the target protein. The loss rate was determined by accelerated thermal degradation test, that is, incubate the protein at 37°C for 48h, and no obvious degradation and precipitation were observed. (Referring from China Biological Products Standard, which was calculated by the Arrhenius equation.) The loss of this protein is less than 5% within the expiration date under appropriate storage condition.

[SEQUENCES]

The sequence of the target protein is listed below.

DEPQSQ WDKVKDFANV YVDAVKDSGR DYVSQFESS LGQQLNLL ENWDTLGSTV
S Q L Q E R L G P L T R D F W D N L E K E T D W V R Q E M N K D L E E V K Q K V Q P Y L D E F Q K K
WKEDVELYRQ KVAPLGAELQ ESARQKLQEL QGRLSPVAEE FRDRMRTHVD SLRTQLAPHS
EQMRESLAQR LAELKSNPTL NEYHTRAKTH LKTLGEKARP ALEDLRHSLM PMLETLKTKA
QSVIDKASET LTAQ



TEL:4006-871-227 Web:www.ybio.net Email:shybio@126.com

[REFERENCES]

1. Madenspacher J.H., *et al.* (2012) J. Biol. Chem. 287:43730-43740.
2. Cote M., *et al.* (2011) BMC Res Notes 4:235-235.
3. Wang Y., *et al.* (2011) J. Lipid Res. 52:1461-1470.
4. Wang Y., *et al.* (2008) J. Lipid Res. 49:1640-1645.