



TEL:4006-871-227 Web:www.ybio.net Email:shybio@126.com

**YBG669Hu01 100μg**

**Recombinant Chloride Channel Accessory 1 (CLCA1)**

**Organism Species: Homo sapiens (Human)**

***Instruction manual***

FOR IN VITRO USE AND RESEARCH USE ONLY

NOT FOR USE IN CLINICAL DIAGNOSTIC PROCEDURES

10th Edition (Revised in Jan, 2014)

## **[ PROPERTIES ]**

**Residues:** Asn416~Arg670

**Tags:** N-terminal His-Tag

**Accession:** A8K714

**Host:** *E. coli*

**Subcellular Location:** Secreted, extracellular space.

Cell membrane; Peripheral membrane protein;

Extracellular side.

**Purity:** >95%

**Endotoxin Level:** <1.0EU per 1μg

(determined by the LAL method).

**Formulation:** Supplied as lyophilized form in 20mM Tris, 150mM NaCl, pH8.0, containing 1mM EDTA, 1mM DTT, 0.01% sarcosyl, 5% trehalose, and preservative.

**Predicted isoelectric point:** 7.1

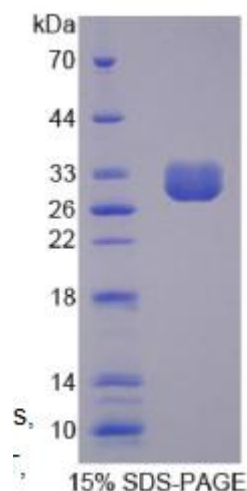
**Predicted Molecular Mass:** 28.7kDa

**Applications:** SDS-PAGE; WB; ELISA; IP.

(May be suitable for use in other assays to be determined by the end user.)

## **[ USAGE ]**

Reconstitute in sterile ddH<sub>2</sub>O.





## [ **STORAGE AND STABILITY** ]

**Storage: Avoid repeated freeze/thaw cycles.**

Store at 2-8°C for one month.

Aliquot and store at -80°C for 12 months.

**Stability Test:** The thermal stability is described by the loss rate of the target protein. The loss rate was determined by accelerated thermal degradation test, that is, incubate the protein at 37°C for 48h, and no obvious degradation and precipitation were observed. (Referring from China Biological Products Standard, which was calculated by the Arrhenius equation.) The loss of this protein is less than 5% within the expiration date under appropriate storage condition.

## [ **SEQUENCES** ]

The sequence of the target protein is listed below.

NTISG CFNEVKQSGA IIHTVALGPS AAQEELELSK MTGGLQTYAS DQVQNGLID  
AFGALSSGNG AVSQRSIQLE SKGLTLQNSQ WMNGTVIVDS TVGKDTLFLI TWTMQPPQIL  
LWDPSGQKQG GFVVDKNTKM AYLQIPGIAK VGTWKYSLQA SSQTLTLTVT SRASNATLPP  
ITVTSKTNKD TSKFPSPLVV YANIRQGASP ILRASVTALI ESVNGKTVTL ELLDNGAGAD  
ATKDDGVYSR YFTTYDTNGR

## [ **REFERENCES** ]

1. Bailey S.D., *et al.* (2010) Diabetes Care 33:2250-2253.
2. Hauber H.P., *et al.* (2010) J. Cyst. Fibros. 9:277-279.
3. Wu W., *et al.* (2010) Lin Chung Er Bi Yan Hou Tou Jing Wai Ke Za Zhi 24:193-5, 2010:199-199.
4. Han S., *et al.* (2010) Hum. Immunol. 71:727-730.