



TEL:4006-871-227 Web:www.ybio.net Email:shybio@126.com

YBA548Ca01 100 μ g

Recombinant Intercellular Adhesion Molecule 1 (ICAM1)

Organism Species: *Canis familiaris*; Canine (Dog)

Instruction manual

FOR IN VITRO USE AND RESEARCH USE ONLY

NOT FOR USE IN CLINICAL DIAGNOSTIC PROCEDURES

10th Edition (Revised in Jan, 2014)

[PROPERTIES]

Residues: Gly25~Pro531

Tags: Two N-terminal Tags, His-tag and GST-tag

Accession: F1PB95

Host: *E. coli*

Subcellular Location: Membrane.

Purity: >90%

Endotoxin Level: <1.0EU per 1 μ g (determined by the LAL method).

Formulation: Supplied as lyophilized form in PBS,

pH7.4, containing 5% trehalose, 0.01% sarcosyl.

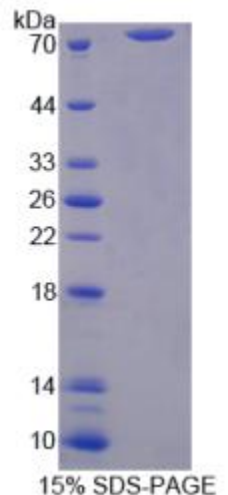
Predicted isoelectric point: 5.5

Predicted Molecular Mass: 85.9kDa

Applications: SDS-PAGE; WB; ELISA; IP.

(May be suitable for use in other assays to be determined by the end user.)

[USAGE]





Reconstitute in sterile PBS, pH7.2-pH7.4.

[STORAGE AND STABILITY]

Storage: Avoid repeated freeze/thaw cycles.

Store at 2-8°C for one month.

Aliquot and store at -80°C for 12 months.

Stability Test: The thermal stability is described by the loss rate of the target protein. The loss rate was determined by accelerated thermal degradation test, that is, incubate the protein at 37°C for 48h, and no obvious degradation and precipitation were observed. (Referring from China Biological Products Standard, which was calculated by the Arrhenius equation.) The loss of this protein is less than 5% within the expiration date under appropriate storage condition.

[SEQUENCES]

The sequence of the target protein is listed below.

GGAQTS VDPAEAIIPR GGSVQVNCST SCNQTSIFGL ETLTKKELN SGNWVLFEL
TDVQEDSKLI CFSNCHEQTM APMHLTVYWF PERVELAPLP RWQPVGENLT MTCQVAGGAP
RTNLTVVLLR GEEELSRQA VGEPAEVTFT VAVGREDHLA NFSCRTDLDL RHRGLGLFQN
SSAPRQLQTF VLPETPPRLA TPPIVEVGTQ WSVDCITDGV FPASEAQVHL ALAEERLHST
VLYKDSLLA TANVKANPED EGTQQLWCEV TLGDENRRWQ ENVTFYSFPA PNLTISEPEV
SEWTTVTVEC EAPAGVVVSL SGLPSGLAVP RAQFQLNASA ADNRRSFSCS AALEVAGHML
QK N Q T R E L H V L Y G P R L D Q R D C P G N W T W E E G S H Q T L K C Q A W G N P V P E L K C H
RKGDDALLPI GDLRPVKREV AGTYLCQARS PRGEITREVV INVYHQNNI LIIILVTTIV
ILGTVSVAAY LYNRQRKIQK YKLQKAQEA AMKLNTPATP P