



TEL:4006-871-227 Web:www.ybio.net Email:shybio@126.com

YBR264Hu01 100µg

Recombinant C2 Calcium Dependent Domain Containing Protein 3 (C2CD3)

Organism Species: Homo sapiens (Human)

Instruction manual

**FOR IN VITRO USE AND RESEARCH USE ONLY
NOT FOR USE IN CLINICAL DIAGNOSTIC PROCEDURES**

9th Edition (Revised in Jul, 2013)

[PROPERTIES]

**Residues: Asn1432~Leu1647 (Accession # Q4AC94),
with two N-terminal Tags, His-tag and GST-tag.**

Host: *E. coli*

**Subcellular Location: Cytoplasm, cytoskeleton,
cilium basal body. Microtubule organizing center,
centrosome, centriole.**

Purity: >95%

**Endotoxin Level: <1.0EU per 1µg
(determined by the LAL method).**

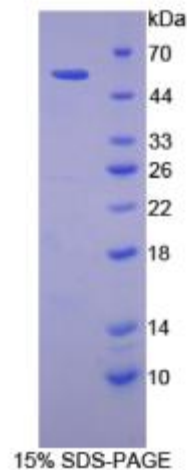
**Formulation: Supplied as lyophilized form in PBS,
pH7.4, containing 5% sucrose, 0.01% sarcosyl.**

Predicted isoelectric point: 6.5

Predicted Molecular Mass: 56.8kDa

Applications: SDS-PAGE; WB; ELISA; IP.

(May be suitable for use in other assays to be determined by the end user.)



[USAGE]

Reconstitute in sterile PBS, pH7.2-pH7.4.



[STORAGE AND STABILITY]

Storage: Avoid repeated freeze/thaw cycles.

Store at 2-8°C for one month.

Aliquot and store at -80°C for 12 months.

Stability Test: The thermal stability is described by the loss rate of the target protein. The loss rate was determined by accelerated thermal degradation test, that is, incubate the protein at 37°C for 48h, and no obvious degradation and precipitation were observed. (Referring from China Biological Products Standard, which was calculated by the Arrhenius equation.) The loss of this protein is less than 5% within the expiration date under appropriate storage condition.

[SEQUENCES]

The target protein is fused with two N-terminal Tags, His-tag and GST-tag, its sequence is listed below.

**MSPILGYWKI KGLVQPTRLLEYLEEKYEE HLYERDEGDK WRNKKFELGL EFPNLPYYID
GDVKLTQSMA IIRYIADKHN MLGGCPKERA EISMLEGAVL DIRYGVSRIA YSKDFETLKV
DFLSKLP EML KMFEDRLCHK TYLNGDHVTH PDFMLYDALD VVLYMDPMCL DAFPKLVCFK
KRIEAIQID KYLKSSKYIA WPLQGQWQATF GGGDHPPKSD GSTSGSGHHH HHHSAGLVPR
GSTAIGMKET AAARKFERQHM DSPDLGTGGG SGIEGRGSMG YRGSEF-NTYCYLRYK
FYDHEAFWTP LKKPKESV NK QIMVTFKAS KRAEVTRGPS LLWYFREERL EIQVWRAYGN
DSVERPHQTD SWIGSAYVDL ARLGERSART LTVSGVYPLF GRNASNLSGA ALRVHVVLLS
LSSHLEP THE LDSMDCSSHS ESEQLPRRND EVQLSPPEVI SCHQKSPAST QVPCSSTTAE
VRLTQEGPAD LDGTF AVSIL VERAMHL**