



TEL:4006-871-227 Web:www.ybio.net Email:shybio@126.com

YBB539Mu01 100 $\mu$ g

Recombinant Serum Amyloid P Component (SAP)

Organism Species: *Mus musculus* (Mouse)

*Instruction  
manual*

FOR IN VITRO USE AND RESEARCH USE ONLY

NOT FOR USE IN CLINICAL DIAGNOSTIC PROCEDURES

10th Edition (Revised in Jan,  
2014)

## [ PROPERTIES ]

Residues: Cys20~Asp224

Tags: N-terminal His-Tag

Accession: P02743

Host: *E. coli*

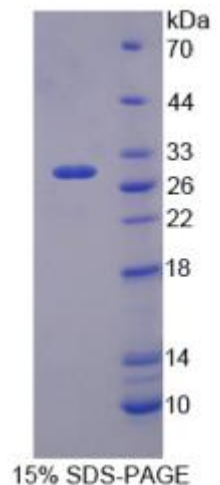
Subcellular Location: Secreted.

Purity: >95%

Endotoxin Level: <1.0EU per 1 $\mu$ g (determined by the LAL method).

Formulation: Supplied as lyophilized form in PBS, pH7.4, containing 5% trehalose, 0.01% sarcosyl.

Predicted isoelectric point: 6.5 Predicted Molecular Mass



The possible reasons that the actual band size differs from the predicted are as follows:

25.5kDa

Accurate Molecular Mass: 29kDa as determined by SDS-PAGE reducing conditions. Applications: SDS-PAGE; WB; ELISA; IP.

(May be suitable for use in other assays to be determined by the end user.)



TEL:4006-871-227 Web:www.ybio.net Email:shybio@126.com

Note:

1. Splice variants: Alternative splicing may create different sized proteins from the same gene.
  2. Relative charge: The composition of amino acids may affects the charge of the protein.
  3. Post-translational modification: Phosphorylation, glycosylation, methylation etc.
- Post-translation cleavage: Many proteins are synthesized as pro-proteins, and then cleaved to give the active form.

[ USAGE ]

Reconstitute in sterile PBS, pH7.2-pH7.4.

[ STORAGE AND STABILITY ]

Storage: Avoid repeated freeze/thaw cycles.

Store at 2-8°C for one month.

Aliquot and store at -80°C for 12 months.

Stability Test: The thermal stability is described by the loss rate of the target protein. The loss rate was determined by accelerated thermal degradation test, that is, incubate the protein at 37°C for 48h, and no obvious degradation and precipitation were observed. (Referring from China Biological Products Standard, which was calculated by the Arrhenius equation.) The loss of this protein is less than 5% within the expiration date under appropriate storage condition.

[ SEQUENCES ]

The sequence of the target protein is listed below.

C QTDLKRKVFV FPRESETDHV KLIPHLEKPL QNFTLCFRITY SDLSRSQSLF SYSVKGRDNE  
LLIYKEKVG EYSLYIGQSKV TVRGMEEYLS PVHLCTTWES SSGIVEFWVN GKPWVKKSLQ  
REYTVKAPPS IVLQGEQDNY GGGFQRSQSF VGEFSDLYMW DYVLTPQDIL FVYRDSPVNP  
NILNWQALNY EINGYVVIRP RVWD