



TEL:4006-871-227 Web:www.ybio.net Email:shybio@126.com

YBC519Hu01 100 μ g

Recombinant Heart And Neural Crest Derivatives Expressed Protein 1
(HAND1)

Organism Species: Homo sapiens (Human)

*Instruction
manual*

FOR IN VITRO USE AND RESEARCH USE ONLY

NOT FOR USE IN CLINICAL DIAGNOSTIC PROCEDURES

10th Edition (Revised in Jan,
2014)

[PROPERTIES]

Residues: Met1~Gln215

Tags: Two N-terminal Tags, His-tag and T7-tag

Accession: 096004

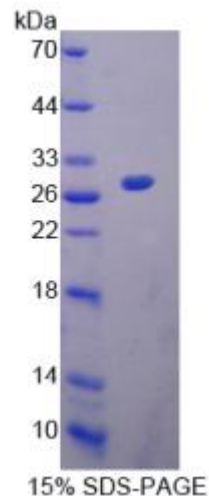
Host: *E. coli*

Subcellular Location: Nucleus, nucleoplasm,
nucleolus.

Purity: >95%

Endotoxin Level: <1.0EU per 1 μ g (determined by the
LAL method).

Formulation: Supplied as lyophilized form in PBS,
pH7.4, containing 5% trehalose, 0.01% sarcosyl.





TEL:4006-871-227 Web:www.ybio.net Email:shybio@126.com

Predicted isoelectric point:

9.7 Predicted Molecular Mass:

27.3kDa

Applications: SDS-PAGE; WB; ELISA; IP.

(May be suitable for use in other assays to be determined by the end user.)

[USAGE]

Reconstitute in sterile PBS, pH7.2-pH7.4.

[STORAGE AND STABILITY]

Storage: Avoid repeated freeze/thaw cycles.

Store at 2-8°C for one month.

Aliquot and store at -80°C for 12 months.

Stability Test: The thermal stability is described by the loss rate of the target protein. The loss rate was determined by accelerated thermal degradation test, that is, incubate the protein at 37°C for 48h, and no obvious degradation and precipitation were observed. (Referring from China Biological Products Standard, which was calculated by the Arrhenius equation.) The loss of this protein is less than 5% within the expiration date under appropriate storage condition.

[SEQUENCES]

The sequence of the target protein is listed below.

M N L V G S Y A H H H H H H H P H P A H P M L H E P F L F G P A S R C H Q E R P Y F Q S W L L S P A
DAAPDFPAGG PPPAAAAAAT AYGPDARPGQ SPGRLEALGG RLGRRKGS GP KKERRRTE SI
NSAFaelREC IPNVPADTKL SKIKTLRLAT SYIAYLMDVL AKDAQSGDPE AFKaelKKAD
GGRESKRKRE LQQHEGFPPA LGPVEKRIKG RTGWPQQVWA LELNQ