



TEL:4006-871-227 Web:www.ybio.net Email:shybio@126.com

YBA156Hu01 50μg

Recombinant Carbohydrate Antigen 19-9 (CA19-9)

Organism Species: Homo sapiens (Human)

*Instruction
manual*

FOR IN VITRO USE AND RESEARCH USE ONLY

NOT FOR USE IN CLINICAL DIAGNOSTIC PROCEDURES

11th Edition (Revised in May,
2016)

[PROPERTIES]

Source: Prokaryotic expression.

Host: *E. coli*

Residues: Arg35~Thr361

Tags: N-terminal His-Tag

Homology: Mouse 45%, rat

44%

Tissue Specificity: Stomach, intestine, lung, kidney.

Subcellular Location: Golgi apparatus, Golgi stack membrane;

Single-pass type II membrane protein.

Purity: >95%

Endotoxin Level: <1.0EU per 1μg (determined by the LAL
method). **Traits:** Freeze-dried powder

Buffer formulation: PBS, pH7.4, containing 1mM DTT, 5% trehalose,
0.01% sarcosyl and Proclin300.

Original Concentration: 200ug/mL

Applications: SDS-PAGE; WB; ELISA; IP; CoIP; Reporter Assays;
Purification; Amine Reactive Labeling.



TEL:4006-871-227 Web:www.ybio.net Email:shybio@126.com

(May be suitable for use in other assays to be determined by the end user.)

Predicted isoelectric point:

9.0 Predicted Molecular Mass:

39.7kDa

Accurate Molecular Mass: 43kDa as determined by SDS-PAGE reducing conditions.

[USAGE]

Reconstitute in PBS (pH7.4) to a concentration of 0.1-1.0 mg/mL. Do not vortex.

[STORAGE AND STABILITY]

Storage: Avoid repeated freeze/thaw cycles.

Store at 2-8°C for one month.

Aliquot and store at -80°C for 12 months.

Stability Test: The thermal stability is described by the loss rate. The loss rate was determined by accelerated thermal degradation test, that is, incubate the protein at 37°C for 48h, and no obvious degradation and precipitation were observed. The loss rate is less than 5% within the expiration date under appropriate storage condition.

[SEQUENCE]

```
SSRQDTTPTR PTLILLWTW PFHIPVALSR CSEMVPGTAD CHITADRKVY
PQADTVIVHH WDIMSNPKSR LPPSPRPQQQ RIIWFNLEPP PNCQHLEALD
RYFNLTMSYR SDSDIFTPYG WLEPWSGQPA HPPLNLSAKT ELVAWAVSNW
KPDSARVRY YQLQAHKVD VYGRSHKPLP KGTMMETLSR YKFYLAFENS
LHPDYITEKL WRNALEAWAV PVVLGPSRSN YERFLPPDAF IHVDDFQSPK
DLARYLQELD KDHARYLSYF RWRETLRPRS FSWALDFCKA CWKLQQESRY
QTVRSIAAWF T
```



TEL:4006-871-227 Web:www.ybio.net Email:shybio@126.com

[IDENTIFICATION]

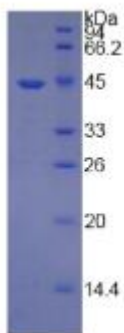


Figure 1. SDS-PAGE