



TEL:4006-871-227 Web:www.ybio.net Email:shybio@126.com

YBH136Mu01

100ug Recombinant Serine Palmitoyltransferase, Long Chain Base Subunit
3 (SPTLC3)

Organism Species: *Mus musculus*
(Mouse)

*Instruction
manual*

FOR IN VITRO USE AND RESEARCH USE ONLY

NOT FOR USE IN CLINICAL DIAGNOSTIC PROCEDURES

10th Edition (Revised in Jan,
2014)

[PROPERTIES]

Residues: Arg80~Ala563

Tags: Two N-terminal Tags, His-tag and T7-tag

Accession: Q8BG54

Host: *E. coli*

Subcellular Location: Endoplasmic reticulum membrane

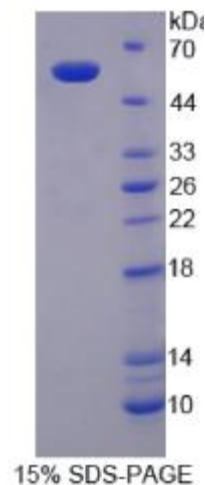
Single-pass membrane protein.

Purity: >90%

Endotoxin Level: <1.0EU per 1 μg (determined by the
LAL method).

Formulation: Supplied as lyophilized form in

20mM Tris, 150mM NaCl, pH8.0, containing 1mM





TEL:4006-871-227 Web:www.ybio.net Email:shybio@126.com

EDTA, 1mM DTT, 0.01% sarcosyl, 5% trehalose, and preservative.

Predicted isoelectric point:

7.3 Predicted Molecular Mass:

58.4kDa

Applications: SDS-PAGE; WB; ELISA; IP.

(May be suitable for use in other assays to be determined by the end user.)

[USAGE] Reconstitute in sterile ddH₂O.

[STORAGE AND STABILITY]

Storage: Avoid repeated freeze/thaw cycles.

Store at 2-8°C for one month.

Aliquot and store at -80°C for 12 months.

Stability Test: The thermal stability is described by the loss rate of the target protein. The loss rate was determined by accelerated thermal degradation test, that is, incubate the protein at 37°C for 48h, and no obvious degradation and precipitation were observed. (Referring from China Biological Products Standard, which was calculated by the Arrhenius equation.) The loss of this protein is less than 5% within the expiration date under appropriate storage condition.

[SEQUENCES]

The sequence of the target protein is listed below.

R D F M R N W G I E K C N A A V E R E E Q K D F V P L Y Q D F E N F Y K R N L Y M R I R D S W S H T V
C S A P E P Y M N V M E K V T D D Y N W T F R H T G K V I E N I I N M A S Y N Y L G L A G K Y D D S M V R V K D T L E K
Y G V G V A S T R N E M G T L D I H K E L E D L M A E F L N V E A V M S F G M G F A T N A M N I P V F V G K G C L I L S
D E F N H T S V I L G S R L S G A V I R P F K H N N A E N L E K L L R E A I I R G Q P G T G R A W K K I L I V V E G V Y
S M E G S I V N L A Q I V A L K K K Y K A Y L Y I D E A H S I G C T G P T G R G V R E L F G L D P E D I D V Y M G T F T



TEL:4006-871-227 Web:www.ybio.net Email:shybio@126.com

KSFSGSGGYI GKGKEIVDYL RMQSHSTTYA TSMSPVVAAQ LIRSLKITMG YEGNIGGMER
IQQLKENIKY FRRRLKEMGF IIYGNDSPV IPVLLYMPAK VSAFSRFLK KKISVVVVG
PATSLPEGRA RFSMSSAHR EMLDTVLEV DELGDLLNVK YFPLKKSRA ILYNKEGFDN
EASFEEMHSE PEA