



TEL:4006-871-227 Web:www.ybio.net Email:shybio@126.com

YBB486Hu01 50μg

Recombinant Calreticulin (CRT)

Organism Species: Homo sapiens (Human)

Instruction manual

FOR IN VITRO USE AND RESEARCH USE ONLY

NOT FOR USE IN CLINICAL DIAGNOSTIC PROCEDURES

10th Edition (Revised in Jan, 2014)

[PROPERTIES]

Residues: Glu18~Ser193

Tags: N-terminal His-Tag

Accession: P27797

Host: *E. coli*

Subcellular Location: Endoplasmic reticulum lumen.

Cytoplasm, cytosol. Secreted, extracellular space, extracellular matrix. Cell surface. Sarcoplasmic reticulum lumen.

Purity: >95%

Endotoxin Level: <1.0EU per 1μg (determined by the LAL method).

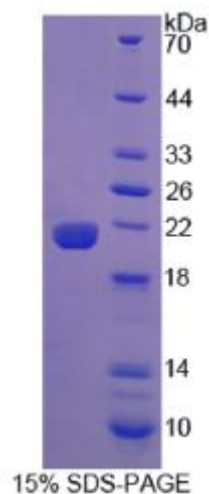
Formulation: Supplied as lyophilized form in 10mM PBS, pH7.4, containing 1mM DTT, 5% trehalose, 0.01% sarcosyl and preservative.

Predicted isoelectric point: 5.9

Predicted Molecular Mass: 21.6kDa

Applications: SDS-PAGE; WB; ELISA; IP.

(May be suitable for use in other assays to be determined by the end user.)





[USAGE]

Reconstitute in sterile ddH₂O.

[STORAGE AND STABILITY]

Storage: Avoid repeated freeze/thaw cycles.

Store at 2-8°C for one month.

Aliquot and store at -80°C for 12 months.

Stability Test: The thermal stability is described by the loss rate of the target protein. The loss rate was determined by accelerated thermal degradation test, that is, incubate the protein at 37°C for 48h, and no obvious degradation and precipitation were observed. (Referring from China Biological Products Standard, which was calculated by the Arrhenius equation.) The loss of this protein is less than 5% within the expiration date under appropriate storage condition.

[SEQUENCES]

The sequence of the target protein is listed below.

EPA VYFKEQFLDG DGWTSRWIES KHKSDFGKFV LSSGKFYGD EKD KGLQTSQ
DARFYALSAS FEPFSNKGQT LVVQFTVKHE QNIDCGGGYV KLFPNSLDQT DMHGDSEYNI
MFGPDICGPG TKKVHVIFNY KGKNVLINKD IRCKDDEFTH LYTLIVRPDN TYEVKIDNSQ VES

[REFERENCES]

1. McCauliffe D.P., *et al.* (1990) J. Clin. Invest. 85:1379-1391.
2. McCauliffe D.P., *et al.* (1992) J. Biol. Chem. 267:2557-2562.
3. Goshima N., *et al.* (2008) Nat. Methods 5:1011-1017.
4. Lieu T.-S., *et al.* (1988) J. Clin. Invest. 82:96-101.