



TEL:4006-871-227 Web:www.ybio.net Email:shybio@126.com

**YB90868Ra
01**

Nitric Oxide Synthase 3, Endothelial (NOS3)

Organism: Rattus norvegicus (Rat)

Instruction manual

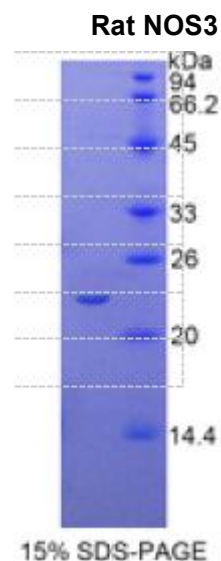
FOR IN VITRO USE AND RESEARCH USE ONLY

NOT FOR USE IN CLINICAL DIAGNOSTIC PROCEDURES

5th Edition (Revised in January, 2013)

[DESCRIPTION]

Protein Names: Nitric Oxide Synthase 3, Endothelial



Synonyms: NOS3

Species: Rat

Size: 100μg

Source: *Escherichia coli*-derived

Subcellular Location: Membrane, caveola.
Cytoplasm, cytoskeleton. Golgi apparatus. Cell
membrane.

[PROPERTIES]

Residues: Ala519~Phe702 (Accession # Q62600),
with N-terminal His-Tag.



TEL:4006-871-227 Web:www.ybio.net Email:shybio@126.com

Grade & Purity: >95%, 23kDa as determined by

SDS-PAGE reducing conditions.

Formulation: Supplied as lyophilized form in PBS, pH

7.4, containing 5% sucrose, 0.01% sarcosyl.

Endotoxin Level: <1.0 EU per 1µg (determined by the LAL method).

Applications: SDS-PAGE; WB; ELISA; IP.

(May be suitable for use in other assays to be determined by the end user.)

Predicted Molecular Mass: 21.8kDa

Predicted isoelectric point: 6.1



TEL:4006-871-227 Web:www.ybio.net Email:shybio@126.com

[PREPARATION]

Reconstitute in sterile PBS, pH7.2-pH7.4.

[STORAGE AND STABILITY]

Storage: Avoid repeated freeze/thaw cycles.

Store at 2-8°C for one month.

Aliquot and store at -80°C for 12 months.

Stability Test: The thermal stability is described by the loss rate of the target protein. The loss rate was determined by accelerated thermal degradation test, that is, incubate the protein at 37°C for 48h, and no obvious degradation and precipitation were observed. (Referring from China Biological Products Standard, which was calculated by the Arrhenius equation.) The loss of this protein is less than 5% within the expiration date under appropriate storage condition.

[SEQUENCES]

The target protein is fused with N-terminal His-Tag, its sequence is listed below.

MGHHHHHSGSEF- AT ILYGSETGRA QSYAQLGRL FRKAFDPRVL CMDEYDVVSL
EHEALVLVVT STFGNGDPPE NGESFAAALM EMGPYNSSP RPEQHKSYKI RFNSVSCSDP
LVSSWRRKRK ESSNTDSAGA LGTLRFCVFG LGSRAYPHFC AFARAVDTRL EELGGERLLQ
LGQGDELGGQ EEAFRGWAQA AF