



TEL:4006-871-227 Web:www.ybio.net Email:shybio@126.com

YBA547Hu01 50 $\mu$ g

Vascular Cell Adhesion Molecule 1 (VCAM1)

Organism Species: Homo sapiens (Human)

*Instruction manual*

FOR IN VITRO USE AND RESEARCH USE ONLY  
NOT FOR USE IN CLINICAL DIAGNOSTIC PROCEDURES

9th Edition (Revised in Jul, 2013)

## [ PROPERTIES ]

Residues: Gln109~Ser318 (Accession # P19320), with N-terminal His-Tag.

Host: *E. coli*

Subcellular Location: Membrane; Single-pass type I membrane protein.

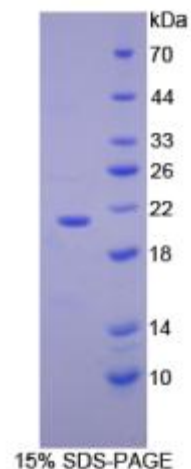
Purity: >95%

Endotoxin Level: <1.0EU per 1 $\mu$ g (determined by the LAL method).

Formulation: Supplied as lyophilized form in PBS, pH7.4, containing 5% sucrose, 0.01% sarcosyl.

Predicted isoelectric point: 5.5

Predicted Molecular Mass:



The possible reasons that the actual band size differs from the predicted are as follows:

24.8kDa

Accurate Molecular Mass: 21kDa as determined by SDS-PAGE reducing conditions. Applications: SDS-PAGE; WB; ELISA; IP.

(May be suitable for use in other assays to be determined by the end user.)

Note:

1. Splice variants: Alternative splicing may create different sized proteins from the same gene.



2. Relative charge: The composition of amino acids may affects the charge of the protein.
3. Post-translational modification: Phosphorylation, glycosylation, methylation etc.
4. Post-translation cleavage: Many proteins are synthesized as pro-proteins, and then cleaved to give the active form.
5. Polymerization of the target protein: Dimerization, multimerization etc.

## [ USAGE ]

Reconstitute in sterile PBS, pH7.2-pH7.4.

## [ STORAGE AND STABILITY ]

Storage: Avoid repeated freeze/thaw cycles.

Store at 2-8°C for one month.

Aliquot and store at -80°C for 12 months.

Stability Test: The thermal stability is described by the loss rate of the target protein. The loss rate was determined by accelerated thermal degradation test, that is, incubate the protein at 37°C for 48h, and no obvious degradation and precipitation were observed. (Referring from China Biological Products Standard, which was calculated by the Arrhenius equation.) The loss of this protein is less than 5% within the expiration date under appropriate storage condition.

## [ SEQUENCES ]

The target protein is fused with N-terminal His-Tag, its sequence is listed below.

MGHHHHHSGSEF-QV EIYSFPKDPE IHLSGPLEAG KPITVKCSVA DVYFPDRLEI  
DLLKGDHLMK SQEFLEADR KSLETKSLEV TFTPVIEDIG KVLVCRALH IDEMDSVPTV  
RQAVKELQVY ISPKNTVISV NPSTKLQEGG SVTMTCSSEG LPAPEIFWSK KLDNGNLQHL  
SGNATLTLIA MRMEDSGIYV CEGVNLIGKN RKEVELIVQE KPFTVEIS

## [ REFERENCES ]



TEL:4006-871-227 Web:www.ybio.net Email:shybio@126.com

1. Kim K. H., *et al.* (2012) *Phytother Res* 26:1037-1047.
2. Kanmaz-Ozer M., *et al.* (2012) *Eur. J. Obstet. Gynecol. Reprod. Biol.* 160:174-178.
3. Cartee T. V., *et al.* (2012) *J. Dermatol. Sci.* 65:86-94.
4. Saikia U. N., *et al.* (2012) *Cardiovasc. Pathol.* 21:83-88.