



TEL:4006-871-227 Web:www.ybio.net Email:shybio@126.com

YBB983Mu01 10 μ g

Recombinant Microtubule Associated Protein Tau (MAPt)

Organism Species: *Mus musculus* (Mouse)

*Instruction
manual*

FOR IN VITRO USE AND RESEARCH USE ONLY
NOT FOR USE IN CLINICAL DIAGNOSTIC PROCEDURES

10th Edition (Revised in Jan,
2014)

[PROPERTIES]

Residues: Ala92~Val400

Tags: Two N-terminal Tags, His-tag and T7-tag

Accession: P10637

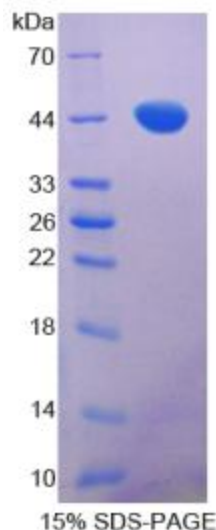
Host: *E. coli*

Subcellular Location: Cytoplasm, cytosol. Cell
membrane; Peripheral membrane protein;
Cytoplasmic side. Cytoskeleton. Cell projection,
axon .

Purity: >95%

Endotoxin Level: <1.0EU per 1 μ g (determined by the
LAL method).

Formulation: Supplied as lyophilized form in 20mM
Tris, 500mM NaCl, pH8.0, containing 1mM EDTA, 1mM
DTT, 0.01% sarcosyl, 5% trehalose, and



The possible reasons that the actual band size differs from the predicted are as follows:
preservative.



Predicted isoelectric point:

10.1 Predicted Molecular Mass:

36.0kDa

Accurate Molecular Mass: 44kDa as determined by SDS-PAGE reducing conditions. Applications: SDS-PAGE; WB; ELISA; IP.

(May be suitable for use in other assays to be determined by the end user.)

Note:

1. Splice variants: Alternative splicing may create different sized proteins from the same gene.
2. Relative charge: The composition of amino acids may affects the charge of the protein.
3. Post-translational modification: Phosphorylation, glycosylation, methylation etc.
4. Post-translation cleavage: Many proteins are synthesized as pro-proteins, and then cleaved to give the active form.
5. Polymerization of the target protein: Dimerization, multimerization etc.

[USAGE]

Reconstitute in ddH₂O.

[STORAGE AND STABILITY]

Storage: Avoid repeated freeze/thaw cycles.

Store at 2-8°C for one month.

Aliquot and store at -80°C for 12 months.

Stability Test: The thermal stability is described by the loss rate of the target protein. The loss rate was determined by accelerated thermal degradation test, that is, incubate the protein at 37°C for 48h, and no obvious degradation and precipitation were observed. (Referring from China Biological Products Standard, which was calculated by the Arrhenius equation.) The loss of this protein is less than 5% within the expiration date under appropriate storage condition.

[SEQUENCES]



TEL:4006-871-227 Web:www.ybio.net Email:shybio@126.com

The sequence of the target protein is listed below.

AEEAGIGDT PNQEDQAAGH VTQARVASKD RTGNDEKKAK GADGKTGAKI ATPRGAASPA
QKGTSNATRI PAKTTPSPKT PPGSGEPPKS GERSGYSSPG SPGTPGSRSR TPSLPTPPTR
EPKKVAVVRT PPKSPSASKS RLQTAPVPMP DLKNVRSKIG STENLKHQPG GGVQIINKK
LDLSNVQSKC GSKDNIKHVP GGGSVQIVYK PVDLSKVTSK CGSLGNIHHK PGGGQVEVKS
EKLDFKDRVQ SKIGSLDNIT HVPGGGNKKI ETHKLTFRN AKAKTDHGAE IVYKSPVVS
GDTSPRHLSNV

[REFERENCES]

1. Couchie D., *et al.* (1992) Proc. Natl. Acad. Sci. U. S. A. 89:4378-4381.
2. Kenner L., *et al.* (1994) Hepatology 20:1086-1089.
3. Sawa A., *et al.* (1994) Brain Res. Mol. Brain Res. 27:111-117.
4. Church D.M., *et al.* (2009) PLoS Biol. 7:E1000112-E1000112.