



TEL:4006-871-227 Web:www.ybio.net Email:shybio@126.com

YBA548Hu01 10 μ g

**Recombinant Intercellular Adhesion Molecule 1
(ICAM1)**

Organism Species: Homo sapiens (Human)

*Instruction
manual*

FOR IN VITRO USE AND RESEARCH USE ONLY

NOT FOR USE IN CLINICAL DIAGNOSTIC PROCEDURES

11th Edition (Revised in May,
2016)

[**PROPERTIES**]

Source: Prokaryotic expression.

Host: *E. coli*

Residues: Gly41~Gly464

Tags: N-terminal His-Tag

Tissue Specificity: Lymph.

Subcellular Location: Membrane; Single-pass type I membrane protein.

Purity: >95%

Traits: Freeze-dried powder

Buffer formulation: PBS, pH7.4, containing 1mM DTT, 5% trehalose,
0.01% sarcosyl and Proclin300.

Original Concentration: 200 μ g/mL

Applications: SDS-PAGE; WB; ELISA; IP; CoIP; Reporter Assays;
Purification; Amine Reactive Labeling.

(May be suitable for use in other assays to be determined by the end user.)



TEL:4006-871-227 Web:www.ybio.net Email:shybio@126.com

Predicted isoelectric point:

5.7 Predicted Molecular Mass:

47.5kDa

Accurate Molecular Mass: 45kDa as determined by SDS-PAGE reducing conditions.

[USAGE]

Reconstitute in PBS (pH7.4) to a concentration of 0.1-1.0 mg/mL. Do not vortex.

[STORAGE AND STABILITY]

Storage: Avoid repeated freeze/thaw cycles.

Store at 2-8°C for one month.

Aliquot and store at -80°C for 12 months.

Stability Test: The thermal stability is described by the loss rate. The loss rate was determined by accelerated thermal degradation test, that is, incubate the protein at 37°C for 48h, and no obvious degradation and precipitation were observed. The loss rate is less than 5% within the expiration date under appropriate storage condition.

[SEQUENCE]

				GGSVLVCST
SCDQPKLLGI	ETPLPKKELL	LPGNNRKVYE	LSNVQEDSQP	MCYSNCPDGQ
STAKTFLTVY	WTPERVELAP	LPSWQPVGKN	LTLRCQVEGG	APRANLTVVL
LRGEKELKRE	PAVGEPAEVT	TTVLVRRDHH	GANFSCRETEL	DLRPQGLELF
ENTSAPYQLQ	TFVLPATPPQ	LVSPRVLEVD	TQGTVVCSLD	GLFPVSEAQV
HLALGDQRLN	PTVTYGNSF	SAKASVSVTA	EDEGTQRLTC	AVILGNQSQE
TLQTVTIYSF	PAPNVILTKP	EVSEGTEVTV	KCEAHPRAKV	TLNGVPAQPL
GPRAQLLLKA	TPEDNGRSFS	CSATLEVAGQ	LIHKNQTREL	RVLYGPRLDE
RDCPGNWTWP	ENSQQTPMCQ	AWGNPLPELK	CLKDGTFFLP	IGESVTVTRD
LEGTYLCRAR	STQG			

[IDENTIFICATION]

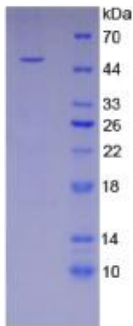


Figure 1. SDS-PAGE



EL:4006-871-
227 Web:www.ybio.
net Email:shybio
@126.com