



YBB370Hu01 100µg

Recombinant Lactate Dehydrogenase A (LDHA)

Organism Species: Homo sapiens (Human)

Instruction manual

FOR IN VITRO USE AND RESEARCH USE ONLY

NOT FOR USE IN CLINICAL DIAGNOSTIC PROCEDURES

11th Edition (Revised in May, 2016)

[PROPERTIES]

Source: Prokaryotic expression.

Host: *E. coli*

Residues: Met1~Ser197 and Val198~Phe332 linked with VPVC

Tags: N-terminal His-Tag

Tissue Specificity: Liver, Lung.

Subcellular Location: Cytoplasm.

Purity: >95%

Traits: Freeze-dried powder

Buffer formulation: 20mM Tris, 150mM NaCl, pH8.0, containing 1mM EDTA, 1mM DTT, 0.01% sarcosyl, 5%Trehalose and Proclin300.

Original Concentration: 200ug/mL

Applications: SDS-PAGE; WB; ELISA; IP; CoIP; Purification; Amine Reactive Labeling.

(May be suitable for use in other assays to be determined by the end user.)

Predicted isoelectric point: 8.1

Predicted Molecular Mass: 40.8kDa

Accurate Molecular Mass: 33kDa as determined by SDS-PAGE reducing conditions.

Phenomenon explanation:

The possible reasons that the actual band size differs from the predicted are as follows:

1. Splice variants: Alternative splicing may create different sized proteins from the same gene.



TEL:4006-871-227 Web:www.ybio.net Email:shybio@126.com

2. Relative charge: The composition of amino acids may affects the charge of the protein.
3. Post-translational modification: Phosphorylation, glycosylation, methylation etc.
4. Post-translation cleavage: Many proteins are synthesized as pro-proteins, and then cleaved to give the active form.
5. Polymerization of the target protein: Dimerization, multimerization etc.

[USAGE]

Reconstitute in 20mM Tris, 150mM NaCl (pH8.0) to a concentration of 0.1-1.0 mg/mL. Do not vortex.

[STORAGE AND STABILITY]

Storage: Avoid repeated freeze/thaw cycles.

Store at 2-8°C for one month.

Aliquot and store at -80°C for 12 months.

Stability Test: The thermal stability is described by the loss rate. The loss rate was determined by accelerated thermal degradation test, that is, incubate the protein at 37°C for 48h, and no obvious degradation and precipitation were observed. The loss rate is less than 5% within the expiration date under appropriate storage condition.

[SEQUENCE]

```
MATLKDQLIY NLLKEEQTPQ NKITVVGVGA VGMACAISIL MKDLADELAL
VDVIEDKLGK EMDLQHGSL FLRTPKIVSG KDYNVTANSK LVIITAGARQ
QEGESRLNLV QRNVNIFKFI IPNVVKYSPN CKLLIVSNPV DILTYVAWKI
SGFPKNRVIG SGCNLD SARF RYLMGERLGV HPLSCHGWVL GEHGDSSVPV
CVPVWSGMNV AGVSLKTLHP DLGTDKDKEQ WKEVHKQVVE SAYEVIKLGK
YTSWAIGLSV ADLAESIMKN LRRVHPVSTM IKGLYGIKDD VFLSVPCILG
QNGISDLVKV TLTSEEEARL KKSADTLWGI QKELQF
```



TEL:4006-871-

227 Web:www.ybio.net Email:
shybio@126.com

[IDENTIFICATION]

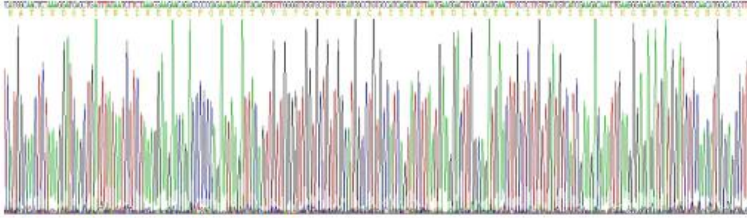


Figure 1. Gene Sequencing (extract)

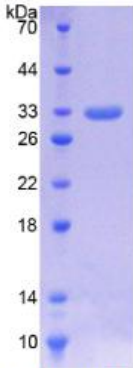


Figure 2. SDS-PAGE



TEL:4006-871-

227 Web:www.ybio.net Email:
shybio@126.com