



TEL:4006-871-227 Web:www.ybio.net Email:shybio@126.com

**YBB441Hu01 100µg**  
**Recombinant Lysosomal Associated Membrane Protein 1 (LAMP1)**  
**Organism Species: Homo sapiens (Human)**  
***Instruction manual***

**FOR IN VITRO USE AND RESEARCH USE ONLY**  
**NOT FOR USE IN CLINICAL DIAGNOSTIC PROCEDURES**

9th Edition (Revised in Jul, 2013)

**[ PROPERTIES ]**

**Residues: Ala49~Ser297 (Accession # P11279), with two N-terminal Tags, His-tag and GST-tag.**

**Host: *E. coli***

**Subcellular Location: Cell membrane; Lysosome membrane;Single-pass type I membrane protein. Endosome membrane; Late endosome.**

**Purity: >95%**

**Endotoxin Level: <1.0EU per 1µg (determined by the LAL method).**

**Formulation: Supplied as lyophilized form in PBS, pH7.4, containing 5% sucrose, 0.01% sarcosyl.**

**Predicted isoelectric point: 6.6**

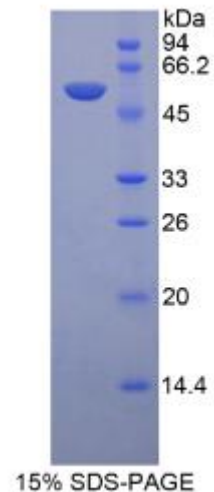
**Predicted Molecular Mass: 58.9kDa**

**Applications: SDS-PAGE; WB; ELISA; IP.**

**(May be suitable for use in other assays to be determined by the end user.)**

**[ USAGE ]**

**Reconstitute in sterile PBS, pH7.2-pH7.4.**





## **[ STORAGE AND STABILITY ]**

**Storage: Avoid repeated freeze/thaw cycles.**

**Store at 2-8°C for one month.**

**Aliquot and store at -80°C for 12 months.**

**Stability Test:** The thermal stability is described by the loss rate of the target protein. The loss rate was determined by accelerated thermal degradation test, that is, incubate the protein at 37°C for 48h, and no obvious degradation and precipitation were observed. (Referring from China Biological Products Standard, which was calculated by the Arrhenius equation.) The loss of this protein is less than 5% within the expiration date under appropriate storage condition.

## **[ SEQUENCES ]**

**The target protein is fused with two N-terminal Tags, His-tag and GST-tag, its sequence is listed below.**

**MSPILGYWKI KGLVQPTRL L LEYLEEKYEE HLYERDEGDK WRNKKFELGL EFPNLPYYID  
GDVKLTQSMA IIRYIADKHN MLGGCPKERA EISMLEGAVL DIRYGVSRIA YSKDFETLKV  
DFLSKLP EML KMFEDRLCHK TYLNGDHVTH PDFMLYDALD VVLYMDPMCL DAFPKLVCFK  
KRIEAIQID KYLKSSKYIA WPLQG WQATF GGGDHPPKSD GSTSGSGHHH HHSAGLVPR  
GS TA I G M K E T AA A K F E R Q H M D S P D L G T L E V L F Q G P L G S E F - A F S V N Y D T K S G P  
KNMTFDLPSD ATVVLNRSSC GKENTS DPSL VIAFGRGHTL TLNFRNATR YSVQLMSFVY  
NLS DTHLFPN ASSKEIKTVE SITDIRADID KKYRCVSGTQ VHMNNVTVT L HDATI QAYLS  
NSSFSRGETR CEQDRPSPTT APPAPPSPSP SPVPKSPSVD KYNVSGTNGT CLLASMGLQL  
NLTYERKDNT TVTRLLNINP NKTSASGSCG AHLVTLELHS EGTTVLLFQF GMNASSS**