



TEL:4006-871-227 Web:www.ybio.net Email:shybio@126.com

YBF953Hu01 100µg

Recombinant Nesprin 1 (Nesp1)

Organism Species: Homo sapiens (Human)

***Instruction
manual***

FOR IN VITRO USE AND RESEARCH USE ONLY

NOT FOR USE IN CLINICAL DIAGNOSTIC PROCEDURES

10th Edition (Revised in Jan,
2014)

[PROPERTIES]

Residues: Lys30~Pro283

Tags: Two N-terminal Tags, His-tag and T7-tag

Accession: Q8NF91

Host: *E. coli*

**Subcellular Location: Cytoplasm, Cytoskeleton,
Membrane, Nucleus.**

Purity: >95%

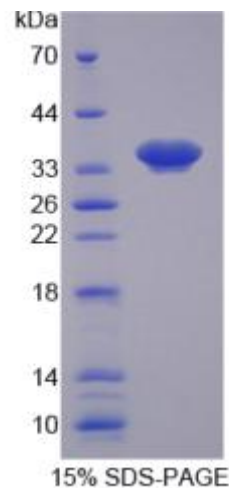
**Endotoxin Level: <1.0EU per 1µg (determined by
the LAL method).**

**Formulation: Supplied as lyophilized form in PBS,
pH7.4, containing 5% trehalose, 0.01% sarcosyl.**

Predicted isoelectric point: 9.3

Predicted Molecular Mass: 32.1kDa

Accurate Molecular Mass: 36kDa as determined by SDS-PAGE reducing



The possible reasons that the actual band size differs from the predicted are as follows:
conditions.

Applications: SDS-PAGE; WB; ELISA; IP.

(May be suitable for use in other assays to be determined by the end user.)

Note:

1. Splice variants: Alternative splicing may create different sized proteins from the same gene.
2. Relative charge: The composition of amino acids may affects the charge of the protein.



TEL:4006-871-227 Web:www.ybio.net Email:shybio@126.com

3. Post-translational modification: Phosphorylation, glycosylation, methylation etc.
4. Post-translation cleavage: Many proteins are synthesized as pro-proteins, and then cleaved to give the active form.
5. Polymerization of the target protein: Dimerization, multimerization etc.

[USAGE]

Reconstitute in sterile PBS, pH7.2-pH7.4.

[STORAGE AND STABILITY]

Storage: Avoid repeated freeze/thaw cycles.

Store at 2-8°C for one month.

Aliquot and store at -80°C for 12 months.

Stability Test: The thermal stability is described by the loss rate of the target protein. The loss rate was determined by accelerated thermal degradation test, that is, incubate the protein at 37°C for 48h, and no obvious degradation and precipitation were observed. (Referring from China Biological Products Standard, which was calculated by the Arrhenius equation.) The loss of this protein is less than 5% within the expiration date under appropriate storage condition.

[SEQUENCES]

The sequence of the target protein is listed below.

K RTFTKWINSH LAKRKPPMVV DDLFEDMKDG VKLLALLEVL SGQKLPCEQG RRMKRIHAVA
NIGTALKFLE GRKIKLVNIN STDIADGRPS IVLGLMWTII LYFQIEELTS NLPQLQSLSS
SASSVDSIVS SETPSPPSKR KVTTKIQGNA KKALLKWVQY TAGKQTGIEV KDFGKSWRSG
VAFHSVIHAI RPELVDLETV KGRSNRENLE DAFTIAETEL GIPRLDPED VDVKPDEKS
IMTYVAQFLK HYP