

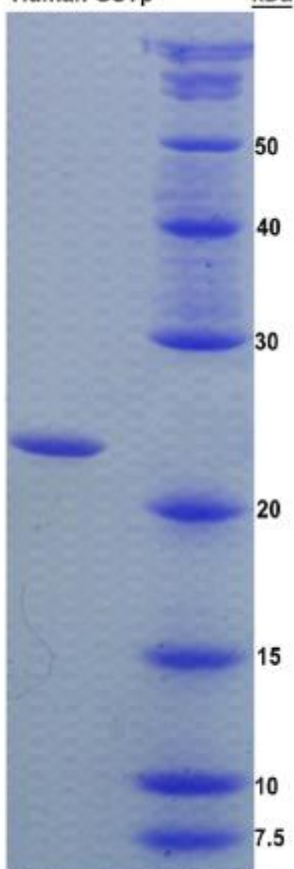
FOR IN VITRO USE AND RESEARCH USE ONLY
NOT FOR USE IN DIAGNOSTIC OR THERAPEUTIC PROCEDURES

1th Edition (Revised in February, 2012)

[DESCRIPTION]

Human GSTp

kDa



15% Tris-glycine SDS-PAGE

Protein Names: Glutathione S Transferase Pi (GSTp); GSTP1; GST-P1; DFN7; FAEES3; GST3

Gene Names: GSTP1; FAEES3; GST3

Size: 100 μ g (400 μ L,250 μ g/mL)

Source: Recombinant

Expression Host: *E.coli*

Function: Conjugation of reduced glutathione to a wide number of exogenous and endogenous hydrophobic electrophiles. Regulates negatively CDK5 activity via p25/p35 translocation to prevent neurodegeneration.

Subcellular Location: Cytoplasm

Tissue Specificity: Ubiquitous

[PROPERTIES]

Residues: Met1-Gln210 (Accession # P09211), with a N-terminal His-tag.

Grade & Purity: >97%, 24.6kDa as determined by SDS-PAGE reducing conditions.

Form & Buffer: 20% glycerol, 2mM EDTA, 12mM Sodium phosphate,150mM Sodium

chloride, pH 7.4.

Endotoxin Level: <1.0 EU per 1 μ g(determined by the LAL method).



TEL:4006-871-227 Web:www.ybio.net Email:shybio@126.com

Applications: SDS-PAGE; WB; ELISA;IP.

(May be suitable for use in other assays to be determined by the end user.)

Predicted Molecular Mass: 24.6 kDa

[PREPARATION]

Reconstitute in PBS.

[STORAGE AND STABILITY]

Storage: Store at 4°C for short term storage (1-2 weeks). Aliquot and store at -20°C or -80°C for long term storage. Avoid repeated freeze/thaw cycles.

Valid period: 12 months stored at -80°C.

[BACKGROUND]

The target protein is fused with a His-tag and its sequence is listed below. The first Met is an initiator amino acid. Moreover, Gly and Ser are added to improve the flexibility of N-terminus at both ends of the His-tag, which will increase the chelating ability of the tag to Ni-Sepharose during purification.

Protein Sequence:MGHHHHHSGS-MPPYTVVYFPVRGRCAALRMLLA DQGQSWKEEVVTVETWQEGSLKAS
CLYGQLPKFQDGLTLYQSNTILRHLGRTLGLYGKDQQAALVDMVNDGVEDLRCKYISLIYTNYEAGKDDYVKA
LPGQLKPFETLLSQNQGGKTFIVGDQISFADYNLLDLLLIHEVLAPGC LDAFPLLSAY VGRLSARPKLKAFLASPE
YVNLPIGNGKQ

[REFERENCES]

1. Kano T., Sakai M., et.al. (1987) Cancer Res. 47:5626-5630.
2. Ali-Osman F., Akande O., et.al.(1997) J. Biol. Chem. 272:10004-10012.
3. Alin P., Mannervik B., et.al. (1985) FEBS Lett. 182:319-322.
4. Gevaert K., Goethals M.,et.al. (2003) Nat. Biotechnol. 21:566-569.
5. Heibeck T.H., Ding S.-J., et.al. (2009) J. Proteome Res. 8:3852-3861.
6. Burkard T.R., Planyavsky M., et.al. (2011) BMC Syst. Biol. 5:17-17.