



TEL:4006-871-227 Web:www.ybio.net Email:shybio@126.com

YC842Ra01 100 μ g
Recombinant Secreted Frizzled Related Protein 5 (SFRP5)
Organism Species: Rattus norvegicus (Rat)
Instruction manual

FOR IN VITRO USE AND RESEARCH USE ONLY
NOT FOR USE IN CLINICAL DIAGNOSTIC PROCEDURES

10th Edition (Revised in Jan, 2014)

[PROPERTIES]

Residues: Ser45~Val162

Tags: N-terminal His-Tag

Accession: D3ZTV6

Host: *E. coli*

Purity: >95%

Endotoxin Level: <1.0EU per 1 μ g
(determined by the LAL method).

Formulation: Supplied as lyophilized form in 20mM
Tris, 150mM NaCl, pH8.0, containing 1mM EDTA, 1mM
DTT, 0.01% sarcosyl, 5% trehalose, and preservative.

Predicted isoelectric point: 6.6

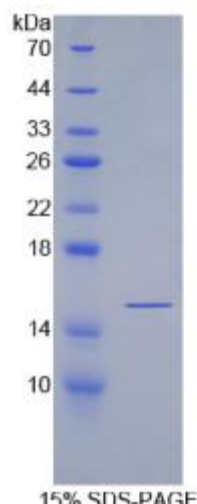
Predicted Molecular Mass: 14.8kDa

Applications: SDS-PAGE; WB; ELISA; IP.

(May be suitable for use in other assays to be determined by the end user.)

[USAGE]

Reconstitute in ddH₂O.





[STORAGE AND STABILITY]

Storage: Avoid repeated freeze/thaw cycles.

Store at 2-8°C for one month.

Aliquot and store at -80°C for 12 months.

Stability Test: The thermal stability is described by the loss rate of the target protein. The loss rate was determined by accelerated thermal degradation test, that is, incubate the protein at 37°C for 48h, and no obvious degradation and precipitation were observed. (Referring from China Biological Products Standard, which was calculated by the Arrhenius equation.) The loss of this protein is less than 5% within the expiration date under appropriate storage condition.

[SEQUENCES]

The sequence of the target protein is listed below.

**SKPPQC LDIPADLPLC HTVGYKRMRL PNLEHESLA EVKQQASSWL PLLAKRCHSD
TQVFLCSLFA PVCLDRPIYP CRSLCEAVRA GCAPLMEAYG FPWPEMLHCH KFPLDNDLCI
AV**

[REFERENCES]

- 1. Florea L., *et al.* (2005) *Genome Res.* 15:54-66.**
- 2. Cruciat C.M., Niehrs C. (2013) *Cold Spring Harb Perspect Biol* 5:a015081 - a015081.**
- 3. Gibbs R.A., *et al.* (2004) *Nature* 428:493-521.**
- 4. Mural R.J., *et al.* (2005) Submitted to the EMBL/GenBank/DDBJ databases.**