



TEL:4006-871-227 Web:www.ybio.net Email:shybio@126.com

YBB430Ra01 100 $\mu$ g

Recombinant Semaphorin 4D (SEMA4D)

Organism Species: *Rattus norvegicus* (Rat)

*Instruction manual*

FOR IN VITRO USE AND RESEARCH USE ONLY

NOT FOR USE IN CLINICAL DIAGNOSTIC PROCEDURES

10th Edition (Revised in Jan, 2014)

## [ PROPERTIES ]

Residues: Leu145~Gly494

Tags: Two N-terminal Tags, His-tag and GST-tag

Accession: D3ZYR4

Host: *E. coli*

Purity: >90%

Endotoxin Level: <1.0EU per 1 $\mu$ g (determined by the LAL method).

Formulation: Supplied as lyophilized form in PBS, pH7.4, containing 5% trehalose, 0.01% sarcosyl.

Predicted isoelectric point: 7.2

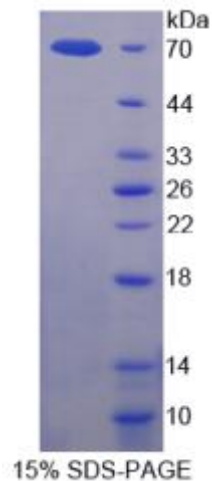
Predicted Molecular Mass: 68.9kDa

Applications: SDS-PAGE; WB; ELISA; IP.

(May be suitable for use in other assays to be determined by the end user.)

## [ USAGE ]

Reconstitute in sterile PBS, pH7.2-pH7.4.





TEL:4006-871-227 Web:www.ybio.net Email:shybio@126.com

## [ STORAGE AND STABILITY ]

Storage: Avoid repeated freeze/thaw cycles.

Store at 2-8°C for one month.

Aliquot and store at -80°C for 12 months.

Stability Test: The thermal stability is described by the loss rate of the target protein. The loss rate was determined by accelerated thermal degradation test, that is, incubate the protein at 37°C for 48h, and no obvious degradation and precipitation were observed. (Referring from China Biological Products Standard, which was calculated by the Arrhenius equation.) The loss of this protein is less than 5% within the expiration date under appropriate storage condition.

## [ SEQUENCES ]

The sequence of the target protein is listed below.

LGKSED GKGRCPDPA HSYTSVMVGG ELYSGTSYNF LGSEPIISRN SSHSPLRTEY  
AIPWLNEPSF VFADVIHKSP DGTEAEDDKV YFFFTEVSVE YEFVFKLMIP RVARVCKGDQ  
GGLRTLQKKW TSFLKARLIC SRPDSGLVFN ILQDVFVLR PGLKEPVFYA VFTPQLNNGV  
LSAVCAYTLS TVEAVFSRGK YMQSATVEQS HTKWVRYNGP VPTPRPGACI DSEARAANYT  
SSLNLPDKTL QFVKDHPLMD DSVTPIDNRP KLIKKDVNYT QIVVDRTQAL DGTFYDVMFL  
STDRGALHKA VILAKEVHV EETQLFQDFE PVL SLLSSK KGRKFVYAGS NSGV