



TEL:4006-871-227 Web:www.ybio.net Email:shybio@126.com

YBH689Hu01 100ug

Recombinant Mannosidase Alpha Class 1A Member 1 (MAN1A1)

Organism Species: Homo sapiens (Human)

Instruction manual

FOR IN VITRO USE AND RESEARCH USE ONLY

NOT FOR USE IN CLINICAL DIAGNOSTIC PROCEDURES

10th Edition (Revised in Jan, 2014)

[PROPERTIES]

Residues: Ile322~Glu653

Tags: Two N-terminal Tags, His-tag and GST-tag

Accession: P33908

Host: *E. coli*

Subcellular Location: Golgi apparatus membrane.

Single-pass type II membrane protein.

Purity: >95%

Endotoxin Level: <1.0EU per 1µg (determined by the LAL method).

Formulation: Supplied as lyophilized form in 20mM Tris, 150mM NaCl, pH8.0, containing 1mM EDTA, 1mM DTT, 0.01% sarcosyl, 5% trehalose, and preservative.

Predicted isoelectric point: 5.8

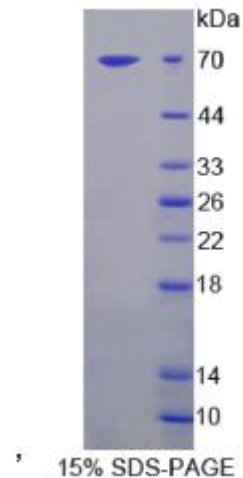
Predicted Molecular Mass: 68.1kDa

Applications: SDS-PAGE; WB; ELISA; IP.

(May be suitable for use in other assays to be determined by the end user.)

[USAGE]

Reconstitute in sterile ddH₂O.





[STORAGE AND STABILITY]

Storage: Avoid repeated freeze/thaw cycles.

Store at 2-8°C for one month.

Aliquot and store at -80°C for 12 months.

Stability Test: The thermal stability is described by the loss rate of the target protein. The loss rate was determined by accelerated thermal degradation test, that is, incubate the protein at 37°C for 48h, and no obvious degradation and precipitation were observed. (Referring from China Biological Products Standard, which was calculated by the Arrhenius equation.) The loss of this protein is less than 5% within the expiration date under appropriate storage condition.

[SEQUENCES]

The sequence of the target protein is listed below.

**IPWALLNMK SGIGRNWPWA SGGSSILAEF GTLHLEFMHL SHLSGNPIFA EKVMNIRTVL
NKLEKPPQGLYPNYLNPSSGQW GQHHVSVGG LGDSFY EYLLKAWLMSDKTD
LEAKKMYFDA VQAIETHLIR KSSSGLTYIA EWKGGLLEHK MGHLTCFAGG MFALGADAAP
EGMAQHYLEL GAEIARTCHE SYNRTFMKLG PEAFRFDGGV EAIATRQNEK YYILRPEVME
TYMYMWR LTHDPKYR K WAW EAVEALEN HCRVNGGYSGLRDVYLLHESYDD
VQQSFFLAET LKYLILIFSD DDLLPLEHWI FNSEAHLLPI LPKDKKEVEI REE**