



TEL:4006-871-227 Web:www.ybio.net Email:shybio@126.com

YBB367Hu01 100 μ g

Recombinant Vascular Endothelial Growth Factor Receptor 2 (VEGFR2)

Organism Species: Homo sapiens (Human)

*Instruction
manual*

FOR IN VITRO USE AND RESEARCH USE ONLY
NOT FOR USE IN CLINICAL DIAGNOSTIC PROCEDURES

9th Edition (Revised in Jul, 2013)

[PROPERTIES]

Residues: Asn46~Thr320 (Accession # P35968),
with N-terminal His-Tag.

Host: *E. coli*

Subcellular Location: Cell membrane;

Single-pass type I membrane protein. Cytoplasm.

Nucleus. Cytoplasmic vesicle. Early endosome.

Purity: >95%

Endotoxin Level: <1.OEU per 1 μ g
(determined by the LAL method).

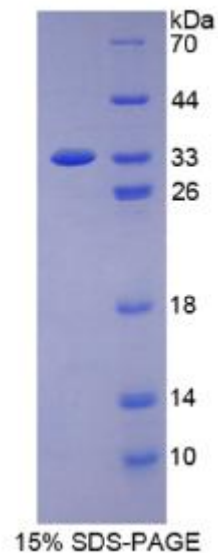
Formulation: Supplied as lyophilized form in PBS,
pH7.4, containing 5% trehalose, 0.01% sarcosyl.

Predicted isoelectric point: 7.6

Predicted Molecular Mass: 32.4kDa

Applications: SDS-PAGE; WB; ELISA; IP.

(May be suitable for use in other assays to be determined by the end user.)





TEL:4006-871-227 Web:www.ybio.net Email:shybio@126.com

[USAGE]

Reconstitute in sterile PBS, pH7.2-pH7.4.

[STORAGE AND STABILITY]

Storage: Avoid repeated freeze/thaw cycles.

Store at 2-8°C for one month.

Aliquot and store at -80°C for 12 months.

Stability Test: The thermal stability is described by the loss rate of the target protein. The loss rate was determined by accelerated thermal degradation test, that is, incubate the protein at 37°C for 48h, and no obvious degradation and precipitation were observed. (Referring from China Biological Products Standard, which was calculated by the Arrhenius equation.) The loss of this protein is less than 5% within the expiration date under appropriate storage condition.

[SEQUENCES]

The target protein is fused with N-terminal His-Tag, its sequence is listed below.

MGHHHHHSGSEF-NTTLQ ITCRGQRDLW LWPNNQSGS EQRVEVTECS DGLFCKTLTI
PKVIGNDTGA YKCFYRETDL ASVIYVVYVQD YRSPFIASVS DQHGCVVYITE NKNKTVVVIPC
LGSISNLNVS LCARYPEKRF VPDGNRISWD SKKGFTIPSY MISYAGMVFC EAKINDESYQ
SIMYIVVVVG YRIYDVVLSP SHGIELSVGE KLVLNCTART ELNVGIDFNW EYPSSKHQHK
KLVNRDLKTQ SGSEMKKFLS TLIDGVTRS DQGLYTCAAS SGLMTKKNST