



TEL:4006-871-227 Web:www.ybio.net Email:shybio@126.com

YBC824Hu01 100 μ g

Recombinant Thymopoietin (TMPO)

Organism Species: Homo sapiens (Human)

*Instruction
manual*

FOR IN VITRO USE AND RESEARCH USE ONLY

NOT FOR USE IN CLINICAL DIAGNOSTIC PROCEDURES

10th Edition (Revised in Jan,
2014)

[PROPERTIES]

Residues: Met1~Leu243

Tags: Two N-terminal Tags, His-tag and T7-tag

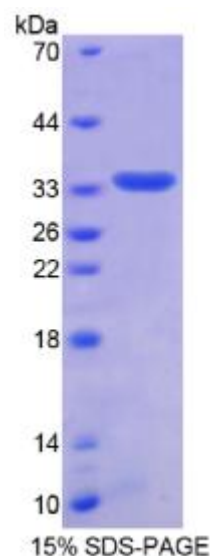
Accession: P42167

Host: *E. coli*

Purity: >95%

Endotoxin Level: <1.0EU per 1 μ g (determined by the LAL
method).

Formulation: Supplied as lyophilized form in PBS, pH7.4,
containing 5% trehalose, 0.01% sarcosyl.



The possible reasons that the actual band size differs from the predicted are as follows:

Predicted isoelectric point:

7.8 Predicted Molecular Mass:

30.5kDa

Accurate Molecular Mass: 35kDa as determined by SDS-PAGE reducing
conditions. Applications: SDS-PAGE; WB; ELISA; IP.



TEL:4006-871-227 Web:www.ybio.net Email:shybio@126.com

(May be suitable for use in other assays to be determined by the end user.)

Note:

1. Splice variants: Alternative splicing may create different sized proteins from the same gene.
2. Relative charge: The composition of amino acids may affects the charge of the protein.
3. Post-translational modification: Phosphorylation, glycosylation, methylation etc.
4. Post-translation cleavage: Many proteins are synthesized as pro-proteins, and then cleaved to give the active form.
5. Polymerization of the target protein: Dimerization, multimerization etc.

[USAGE]

Reconstitute in sterile PBS, pH7.2-pH7.4.

[STORAGE AND STABILITY]

Storage: Avoid repeated freeze/thaw cycles.

Store at 2-8°C for one month.

Aliquot and store at -80°C for 12 months.

Stability Test: The thermal stability is described by the loss rate of the target protein. The loss rate was determined by accelerated thermal degradation test, that is, incubate the protein at 37°C for 48h, and no obvious degradation and precipitation were observed. (Referring from China Biological Products Standard, which was calculated by the Arrhenius equation.) The loss of this protein is less than 5% within the expiration date under appropriate storage condition.

[SEQUENCES]

The sequence of the target protein is listed below.

MPEFLEDPSV LTKDKLKSEL VANNVTL PAG EQRKDVYVQL YLQHLTARNR PPLPAGTNSK
GPPDFSSDEE REPTPVLGSG AAAAGRSRAA VGRKATKKT D KPRQEDKDDL DVTELTNEDL



TEL:4006-871-227 Web:www.ybio.net Email:shybio@126.com

LDQLVKYGVN PGPIVGTTRK LYEKLLKLR EQGTERSSST PLPTISSSAE NTRQNGSND
DRYSDNEEDS KIELKLEKRE PLKGRAKTPV TLKQRRVEHN QSYSQAGITE TEWTSGSSKG
GPL