



TEL:4006-871-227 Web:www.ybio.net Email:shybio@126.com

**YBG198Hu01  
100µg**

**Recombinant Calsyntenin 2 (CLSTN2)  
Organism Species: Homo sapiens (Human)**

***Instruction  
manual***

**FOR IN VITRO USE AND RESEARCH USE ONLY  
NOT FOR USE IN CLINICAL DIAGNOSTIC PROCEDURES**

10th Edition (Revised in Jan,  
2014)

## **[ PROPERTIES ]**

**Residues: Arg31~Gln271**

**Tags: Two N-terminal Tags, His-tag and T7-tag**

**Accession: Q9H4D0**

**Host: *E. coli***

**Subcellular Location: Cell membrane. Endoplasmic  
reticulum. Golgi apparatus. Membrane.**

**Purity: >95%**

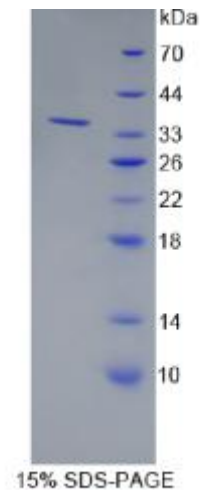
**Endotoxin Level: <1.0EU per 1µg (determined by the  
LAL method).**

**Formulation: Supplied as lyophilized form in PBS,  
pH7.4, containing 5% trehalose, 0.01% sarcosyl.**

**Predicted isoelectric point: 5.4**

**Predicted Molecular Mass: 31.4kDa**

**Accurate Molecular Mass: 36kDa as determined by SDS-PAGE reducing  
conditions.**



The possible reasons that the actual band size differs from the predicted are as follows:

**Applications: SDS-PAGE; WB; ELISA; IP.**

**(May be suitable for use in other assays to be determined by the end user.)**

**Note:**

1. Splice variants: Alternative splicing may create different sized proteins from the same gene.
2. Relative charge: The composition of amino acids may affects the charge of the protein.
3. Post-translational modification: Phosphorylation, glycosylation, methylation etc.



TEL:4006-871-227 Web:www.ybio.net Email:shybio@126.com

4. Post-translation cleavage: Many proteins are synthesized as pro-proteins, and then cleaved to give the active form.

5. Polymerization of the target protein: Dimerization, multimerization etc.

## **[ USAGE ]**

Reconstitute in sterile PBS, pH7.2-pH7.4.

## **[ STORAGE AND STABILITY ]**

Storage: Avoid repeated freeze/thaw cycles.

Store at 2-8°C for one month.

Aliquot and store at -80°C for 12 months.

Stability Test: The thermal stability is described by the loss rate of the target protein. The loss rate was determined by accelerated thermal degradation test, that is, incubate the protein at 37°C for 48h, and no obvious degradation and precipitation were observed. (Referring from China Biological Products Standard, which was calculated by the Arrhenius equation.) The loss of this protein is less than 5% within the expiration date under appropriate storage condition.

## **[ SEQUENCES ]**

The sequence of the target protein is listed below.

RLLAAKVKNH KPWIETSYHG VITENNDTVI LDPPLVALDK DAPVPFAGEI CAFKIHGQEL  
PFEAVVLNKT SGEGR LRAKS PIDCELQKEY TFIIQAYDCG AGPHETAWKK SHKAVVHIQV  
KDVNEFAPTF KEPAYKAVVT EGKIYDSILQ VEAIDEDCSP QYSQICNYEI VT TDV PFAID  
RNGNIRNTEK LSYDKQH QYE ILVTAYDCGQ KPAAQDTLVQ VDVKPVCKPG WQDWTKRIEY  
Q