



TEL:4006-871-227 Web:www.ybio.net Email:shybio@126.com

YBL506Hu01 100 $\mu$ g

Recombinant Family With Sequence Similarity 3, Member C (FAM3C)

Organism Species: Homo sapiens (Human)

*Instruction  
manual*

FOR IN VITRO USE AND RESEARCH USE ONLY  
NOT FOR USE IN CLINICAL DIAGNOSTIC PROCEDURES

10th Edition (Revised in Jan, 2014)

## [ PROPERTIES ]

Residues: Gln25~Asp227

Tags: Two N-terminal Tags, His-tag and T7-tag

Accession: Q92520

Host: *E. coli*

Subcellular Location: Secreted. Cytoplasmic vesicle.

Purity: >90%

Endotoxin Level: <1.0EU per 1 $\mu$ g (determined by the LAL method).

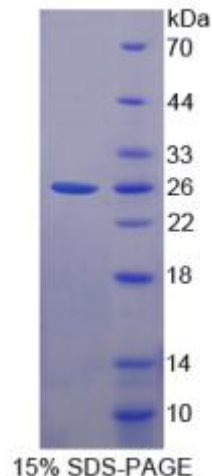
Formulation: Supplied as lyophilized form in PBS, pH7.4, containing 5% trehalose, 0.01% sarcosyl.

Predicted isoelectric point: 7.8

Predicted Molecular Mass:

25.9kDa

Applications: SDS-PAGE; WB; ELISA; IP.





TEL:4006-871-227 Web:www.ybio.net Email:shybio@126.com

(May be suitable for use in other assays to be determined by the end user.)

## [ USAGE ]

Reconstitute in sterile PBS, pH7.2-pH7.4.

## [ STORAGE AND STABILITY ]

Storage: Avoid repeated freeze/thaw cycles.

Store at 2-8°C for one month.

Aliquot and store at -80°C for 12 months.

Stability Test: The thermal stability is described by the loss rate of the target protein. The loss rate was determined by accelerated thermal degradation test, that is, incubate the protein at 37°C for 48h, and no obvious degradation and precipitation were observed. (Referring from China Biological Products Standard, which was calculated by the Arrhenius equation.) The loss of this protein is less than 5% within the expiration date under appropriate storage condition.

## [ SEQUENCES ]

The sequence of the target protein is listed below.

QVFEIK MDASLGNLFA RSALDTAARS TKPPRYKCGI SKACPEKHFA FKMASGAANV  
VGPKICLEDN VLMSGVKNV GRGINVALAN GKTGEVLDTK YFDMWGGDVA PFIEFLKAIQ  
DGTIVLMGTY DDGATKLNDE ARRLIADLGS TSITNLGFRD NWFVCGGKGI KTKSPFEQHI  
KNNKDTNKYE GWPEVVEMEG CIPQKQD