



TEL:4006-871-227 Web:www.ybio.net Email:shybio@126.com

YBA101Bo01 100ug
Recombinant Matrix Metalloproteinase 3 (MMP3)
Organism Species: Bos taurus; Bovine (Cattle)

Instruction manual

FOR IN VITRO USE AND RESEARCH USE ONLY
NOT FOR USE IN CLINICAL DIAGNOSTIC PROCEDURES

10th Edition (Revised in Jan, 2014)

[PROPERTIES]

Residues: Tyr18~Cys477

Tags: Two N-terminal Tags, His-tag and T7-tag

Accession: Q9XSF7

Host: *E. coli*

**Subcellular Location: Secreted, extracellular space,
extracellular matrix.**

Purity: >95%

**Endotoxin Level: <1.0EU per 1µg (determined by the LAL
method).**

**Formulation: Supplied as lyophilized form in 20mM Tris,
150mM NaCl, pH8.0, containing 1mM EDTA, 1mM DTT,
0.01% sarcosyl, 5% trehalose, and preservative.**

Predicted isoelectric point: 5.3

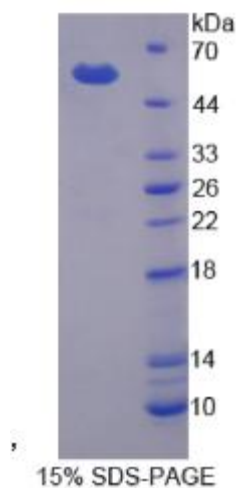
Predicted Molecular Mass: 56.3kDa

Applications: SDS-PAGE; WB; ELISA; IP.

(May be suitable for use in other assays to be determined by the end user.)

[USAGE]

Reconstitute in sterile ddH₂O.





[STORAGE AND STABILITY]

Storage: Avoid repeated freeze/thaw cycles.

Store at 2-8°C for one month.

Aliquot and store at -80°C for 12 months.

Stability Test: The thermal stability is described by the loss rate of the target protein. The loss rate was determined by accelerated thermal degradation test, that is, incubate the protein at 37°C for 48h, and no obvious degradation and precipitation were observed. (Referring from China Biological Products Standard, which was calculated by the Arrhenius equation.) The loss of this protein is less than 5% within the expiration date under appropriate storage condition.

[SEQUENCES]

The sequence of the target protein is listed below.

**YPL DRAARDKEDT MELVQQYLEN YYNLAKDTKQ FVRRKDSSPV VQKIQEMQKF
LGLEVTGKLD SDTLEVIRKP RCGIPDVGFF STFPGSPKWR KTHLTYRIVN YTKDLPRDAV
DSAIEKALTV WEEATPLTFS RIYEGEADIM IIFAIREHGD FLPGDGPVKV LAHAYPPGSG
FYGDAHFDDE EQWTKDTSKI NLFVAAHEL GHSLGLQHST EREALMYPVY DPRTDLTRFR
LSQDDVDGIQ FLYGSPVSP NDPVVPTESV PPEPGTPAAC DPALSFDAVS TLRGEILFFK
GRHFWRKSFR TFEPEFHLIS SFWPSLPSGI DAAEYVTSKD TVFIFKGNQF WAIRGNEMQA
GYPRGIHTLG FPSTVRKIDA AFSDKEKKKT YFFAEDKYWR FDEKRQSMEP GFPKQIVEDF
PGVESEVDAV FEVFGFYFF SGSSQFEFDP NAKKVTHVLK SNSWLNC**