

**YBB564Hu01 50µg**  
**Recombinant Interferon Regulatory Factor 1 (IRF1)**  
**Organism Species: Homo sapiens (Human)**  
***Instruction manual***

**FOR IN VITRO USE AND RESEARCH USE ONLY**  
**NOT FOR USE IN CLINICAL DIAGNOSTIC PROCEDURES**

9th Edition (Revised in Jul, 2013)

**[ PROPERTIES ]**

**Residues:** Trp11~Glu276 (Accession # P10914), with N-terminal His-Tag.

**Host:** *E. coli*

**Subcellular Location:** Nucleus. Cytoplasm.

**Purity:** >95%

**Endotoxin Level:** <1.0EU per 1µg (determined by the LAL method).

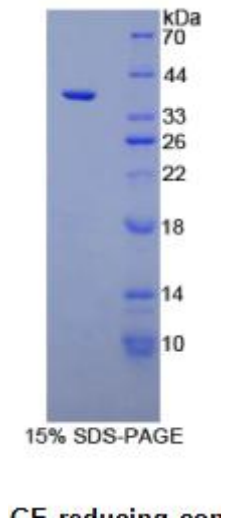
**Formulation:** Supplied as lyophilized form in PBS, pH7.4, containing 5% sucrose, 0.01% sarcosyl.

**Predicted isoelectric point:** 5.7

**Predicted Molecular Mass:** 31.5kDa

**Accurate Molecular Mass:** 39kDa as determined by SDS-reducing conditions.

**Applications:** SDS-PAGE; WB; ELISA; IP.



The possible reasons that the actual band size differs from the predicted are as follows:

**(May be suitable for use in other assays to be determined by the end user.)**

**Note:**

1. Splice variants: Alternative splicing may create different sized proteins from the same gene.
2. Relative charge: The composition of amino acids may affects the charge of the protein.
3. Post-translational modification: Phosphorylation, glycosylation, methylation etc.
4. Post-translation cleavage: Many proteins are synthesized as pro-proteins, and then cleaved to give the active form.



TEL:4006-871-227 Web:www.ybio.net Email:shybio@126.com

**5. Polymerization of the target protein: Dimerization, multimerization etc.**



## **[ USAGE ]**

Reconstitute in sterile PBS, pH7.2-pH7.4.

## **[ STORAGE AND STABILITY ]**

Storage: Avoid repeated freeze/thaw cycles.

Store at 2-8°C for one month.

Aliquot and store at -80°C for 12 months.

Stability Test: The thermal stability is described by the loss rate of the target protein. The loss rate was determined by accelerated thermal degradation test, that is, incubate the protein at 37°C for 48h, and no obvious degradation and precipitation were observed. (Referring from China Biological Products Standard, which was calculated by the Arrhenius equation.) The loss of this protein is less than 5% within the expiration date under appropriate storage condition.

## **[ SEQUENCES ]**

The target protein is fused with N-terminal His-Tag, its sequence is listed below.

MG HHH HHH SG SE F-WLEMQ INSN Q IPG LIWINKE EMIFQ IPWKH AAK HGWD INK  
DACLFRSWAI HTGRYKAGEK EPDPKTWKAN FRCAMNSLPD IEEVKDQSRN KGSSAVRVYR  
MLPPLTKNQR KERKSKSSRD AKSKAKRKSC GDSSPDTFSD GLSSSTLPDD HSSYTVPGYM  
QDLEVEQALT PALSPCAVSS TLPDWHIPVE VVPDSTSDLY NFQVSPMPST SEATTDEDEE  
GKLPEDIMKL LEQSEWQPTN VDGKGYLLNE PGVQPTSVYG DFSCKE

## **[ REFERENCES ]**

1. Maruyama M., *et al.* (1989) *Nucleic Acids Res.* 17:3292-3292.
2. Miyamoto M., *et al.* (1988) *Cell* 54:903-913.
3. Cha Y., *et al.* (1992) *DNA Cell Biol.* 11:605-611.
4. Lin R., Hiscott J. (1999) *Mol. Cell. Biochem.* 191:169-180.