



TEL:4006-871-227 Web:www.ybio.net Email:shybio@126.com

YBB247Hu01 100 μ g

Recombinant Programmed Cell Death Protein 6 Interacting Protein
(PDCD6IP)

Organism Species: Homo sapiens (Human)

*Instruction
manual*

FOR IN VITRO USE AND RESEARCH USE ONLY

NOT FOR USE IN CLINICAL DIAGNOSTIC PROCEDURES

10th Edition (Revised in Jan,
2014)

[PROPERTIES]

Residues: Glu174~Val383

Tags: Two N-terminal Tags, His-tag and GST-tag

Accession: Q8WUM4

Host: *E. coli*

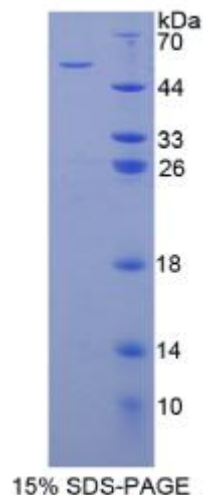
Subcellular Location: Cytoplasm, cytosol.

Melanosome.

Purity: >95%

Endotoxin Level: <1.0EU per 1 μ g (determined by the
LAL method).

Formulation: Supplied as lyophilized form in PBS,
pH7.4, containing 5% trehalose, 0.01% sarcosyl.





TEL:4006-871-227 Web:www.ybio.net Email:shybio@126.com

Predicted isoelectric point:

6.6 Predicted Molecular Mass:

53.8kDa

Applications: SDS-PAGE; WB; ELISA; IP.

(May be suitable for use in other assays to be determined by the end user.)

[USAGE] Reconstitute in sterile PBS, pH7.2-pH7.4.

[STORAGE AND STABILITY]

Storage: Avoid repeated freeze/thaw cycles.

Store at 2-8°C for one month.

Aliquot and store at -80°C for 12 months.

Stability Test: The thermal stability is described by the loss rate of the target protein. The loss rate was determined by accelerated thermal degradation test, that is, incubate the protein at 37°C for 48h, and no obvious degradation and precipitation were observed. (Referring from China Biological Products Standard, which was calculated by the Arrhenius equation.) The loss of this protein is less than 5% within the expiration date under appropriate storage condition.

[SEQUENCES]

The sequence of the target protein is listed below.

EPTVDIS PDTVGTLSLI MLAQAQEVFF LKATRDKMKD AIIAKLANQA ADYFGDAFKQ
CQYKDTLPKY FYFQEVFPVL AAKHCIMQAN AEYHQSILAK QKKKFGEEIA RLQHAAELIK
TVASRYDEYV NVKDFSDKIN RALAAAKKDN DFIYHDRVPD LKDLDPIGKA TLVKSTPVNV
PISQKFTDLF EKMVPVSVQQ SLAAYNQRKA DLV