



TEL:4006-871-227 Web:www.ybio.net Email:shybio@126.com

YBA006Hu01 10 μ g

Recombinant Amphiregulin (AREG)

Organism Species: Homo sapiens (Human)

*Instruction
manual*

FOR IN VITRO USE AND RESEARCH USE ONLY
NOT FOR USE IN CLINICAL DIAGNOSTIC PROCEDURES

10th Edition (Revised in Jan,
2014)

[PROPERTIES]

Residues: Ser20~Asp100

Tags: Two N-terminal Tags, His-tag and GST-tag

Accession: P15514

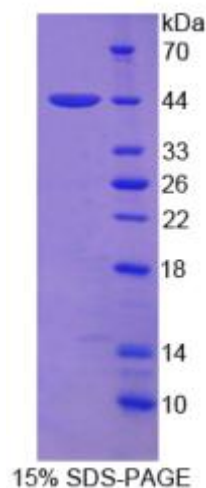
Host: *E. coli*

Subcellular Location: Membrane; Single-pass
membrane protein.

Purity: >95%

Endotoxin Level: <1.0EU per 1 μ g (determined by the
LAL method).

Formulation: Supplied as lyophilized form in PBS,
pH7.4, containing 1mM DTT, 5% trehalose,
0.05% sarcosyl and preservative.



The possible reasons that the actual band size differs from the predicted are as follows:

Predicted isoelectric point:

5.1 Predicted Molecular Mass:

40.7kDa



TEL:4006-871-227 Web:www.ybio.net Email:shybio@126.com

Accurate Molecular Mass: 44kDa as determined by SDS-PAGE reducing conditions. Applications: SDS-PAGE; WB; ELISA; IP.

(May be suitable for use in other assays to be determined by the end user.)

Note:

1. Splice variants: Alternative splicing may create different sized proteins from the same gene.
2. Relative charge: The composition of amino acids may affects the charge of the protein.
3. Post-translational modification: Phosphorylation, glycosylation, methylation etc.
4. Post-translation cleavage: Many proteins are synthesized as pro-proteins, and then cleaved to give the active form.
5. Polymerization of the target protein: Dimerization, multimerization etc.

[USAGE]

Reconstitute in sterile PBS, pH7.2-pH7.4.

[STORAGE AND STABILITY]

Storage: Avoid repeated freeze/thaw cycles.

Store at 2-8°C for one month.

Aliquot and store at -80°C for 12 months.

Stability Test: The thermal stability is described by the loss rate of the target protein. The loss rate was determined by accelerated thermal degradation test, that is, incubate the protein at 37°C for 48h, and no obvious degradation and precipitation were observed. (Referring from China Biological Products Standard, which was calculated by the Arrhenius equation.) The loss of this protein is less than 5% within the expiration date under appropriate storage condition.

[SEQUENCES]

The sequence of the target protein is listed below.

S GH YA A G L D L N D T Y S G K R E P F S G D H S A D G F E V T S R S E M S S G S E I S P V S E M P
SSSEPSSGAD YDYSEEYDNE PQIPGYIVDD



TEL:4006-871-227 Web:www.ybio.net Email:shybio@126.com

[REFERENCES]

1. Levano K. S., Kenny P. A. (2012) FEBS Lett. 586:3500–3502.
2. Culouscou J.-M., *et al.* (1992) Growth Factors 7:195–205.
3. Cook P. W., *et al.* (1991) Mol. Cell. Biol. 11:2547–2557.
4. Shoyab M., *et al.* (1988) Proc. Natl. Acad. Sci. U.S.A. 85:6528–6532.