



TEL:4006-871-227 Web:www.ybio.net Email:shybio@126.com

YBH984Ra01 100 μ g

Recombinant Glycoprotein A33 (GPA33)

Organism Species: *Rattus norvegicus* (Rat)

Instruction manual

FOR IN VITRO USE AND RESEARCH USE ONLY

NOT FOR USE IN CLINICAL DIAGNOSTIC PROCEDURES

10th Edition (Revised in Jan, 2014)

[PROPERTIES]

Residues: Ile22~Ile235

Tags: Two N-terminal Tags, His-tag and T7-tag

Accession: D3ZRJ6

Host: *E. coli*

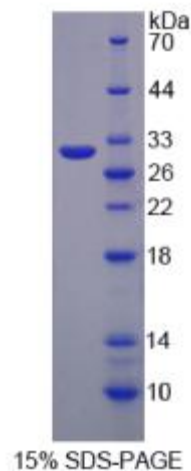
Subcellular Location: Extracellular vesicular
exosome, integral component of membrane, plasma
membrane.

Purity: >95%

Endotoxin Level: <1.0EU per

1 μ g (determined by the LAL
method).

Formulation: Supplied as lyophilized form in PBS,
pH7.4, containing 5% trehalose, 0.01% sarcosyl.





TEL:4006-871-227 Web:www.ybio.net Email:shybio@126.com

Predicted isoelectric point: 5.3

Predicted Molecular Mass:

27.4kDa

Applications: SDS-PAGE; WB; ELISA; IP.

(May be suitable for use in other assays to be determined by the end user.)

[USAGE]

Reconstitute in sterile PBS, pH7.2-pH7.4.

[STORAGE AND STABILITY]

Storage: Avoid repeated freeze/thaw cycles.

Store at 2-8°C for one month.

Aliquot and store at -80°C for 12 months.

Stability Test: The thermal stability is described by the loss rate of the target protein. The loss rate was determined by accelerated thermal degradation test, that is, incubate the protein at 37°C for 48h, and no obvious degradation and precipitation were observed. (Referring from China Biological Products Standard, which was calculated by the Arrhenius equation.) The loss of this protein is less than 5% within the expiration date under appropriate storage condition.

[SEQUENCES]

The sequence of the target protein is listed below.

ITVETTQDV LRAARGKSVT LPCIYSTPVS DRQGFIQWDK LLRSQTEKVA TWFETKKYT
YGSRYENRVR ISNDAELSNA SITIDQLTMD DNGTYECSVS LMSDQDVTSR SRVRLLVLP
PSKPCDGI EG ETVIGNNIQL TCHSAEGSPS PQYSWKS YNA QNQRPLAQP VSGEPLLLKN
ISADTAGYYI CTSSNDVGTE FCNITVAPRP PSMNI