



TEL:4006-871-227 Web:www.ybio.net Email:shybio@126.com

YBC862Mu01 100μg

Recombinant Syntrophin Beta 1 (SNTb1)

Organism Species: Mus musculus (Mouse)

Instruction manual

FOR IN VITRO USE AND RESEARCH USE ONLY

NOT FOR USE IN CLINICAL DIAGNOSTIC PROCEDURES

10th Edition (Revised in Jan, 2014)

[PROPERTIES]

Residues: Ala2~Gly297

Tags: Two N-terminal Tags, His-tag and T7-tag

Accession: Q99L88

Host: *E. coli*

Subcellular Location: Cell membrane, sarcolemma;

Peripheral membrane protein.

Purity: >95%

Endotoxin Level: <1.0EU per 1μg (determined by the LAL method).

Formulation: Supplied as lyophilized form in PBS pH7.4, containing 5% trehalose, 0.01% sarcosyl.

Predicted isoelectric point: 8.7

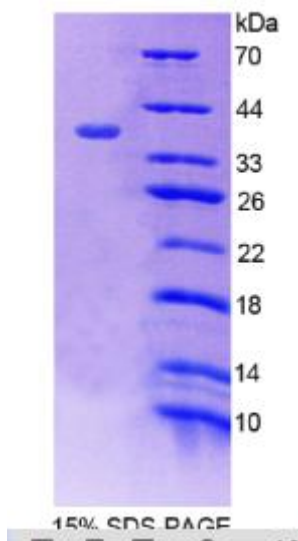
Predicted Molecular Mass: 34.9kDa

Applications: SDS-PAGE; WB; ELISA; IP.

(May be suitable for use in other assays to be determined by the end user.)

[USAGE]

Reconstitute in sterile PBS, pH7.2-pH7.4.





TEL:4006-871-227 Web:www.ybio.net Email:shybio@126.com

[STORAGE AND STABILITY]

Storage: Avoid repeated freeze/thaw cycles.

Store at 2-8°C for one month.

Aliquot and store at -80°C for 12 months.

Stability Test: The thermal stability is described by the loss rate of the target protein. The loss rate was determined by accelerated thermal degradation test, that is, incubate the protein at 37°C for 48h, and no obvious degradation and precipitation were observed. (Referring from China Biological Products Standard, which was calculated by the Arrhenius equation.) The loss of this protein is less than 5% within the expiration date under appropriate storage condition.

[SEQUENCES]

The sequence of the target protein is listed below.

AVAAAAVAA PAGGGGARAQ RSGLLEVLVR DRWHKVLVNL SEDALVLSCE EGAAAYNGIG
AATNGSFCRG SGTGHPVPGV AQAPDSPAGV RTAFTDLPEQ VPESISNQKR GVKVLKQELG
GLGISIKGGK ENKMPIISK IFKGLAADQT QALYVGDAIL SVNGADLRDA THDEAVQALK
RAGKEVLLEV KYMREATPYV KKGSPVSEIG WETPPESPR LGGGSAEPLS SQSFSFHRDR
KSIPLKMCYV TRNMTLADPE NRQLEIHSPD AKHTVILRSK DSATAQAWFS AIHSNAG