



TEL:4006-871-227 Web:www.ybio.net Email:shybio@126.com

YBB376Ra01 100µg

Recombinant BreastCancerSusceptibilityProtein1(BRCA1)

Organism Species: Rattus norvegicus (Rat)

Instruction manual

**FOR IN VITRO USE AND RESEARCH USE ONLY
NOT FOR USE IN CLINICAL DIAGNOSTIC PROCEDURES**

9th Edition (Revised in Jul, 2013)

[PROPERTIES]

**Residues: Ser1579~Glu1811 (Accession # O54952),
with two N-terminal Tags, His-tag and GST-tag.**

Host: *E. coli*

Subcellular Location: Nucleus. Chromosome.

Purity: >95%

**Endotoxin Level: <1.0EU per 1µg (determined by the
LAL method).**

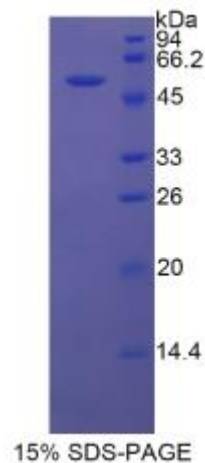
**Formulation: Supplied as lyophilized form in PBS,
pH7.4, containing 5% sucrose, 0.01% sarcosyl.**

Predicted isoelectric point: 5.9

Predicted Molecular Mass: 58.5kDa

Applications: SDS-PAGE; WB; ELISA; IP.

(May be suitable for use in other assays to be determined by the end user.)





[USAGE]

Reconstitute in sterile PBS, pH7.2-pH7.4.

[STORAGE AND STABILITY]

Storage: Avoid repeated freeze/thaw cycles.

Store at 2-8°C for one month.

Aliquot and store at -80°C for 12 months.

Stability Test: The thermal stability is described by the loss rate of the target protein. The loss rate was determined by accelerated thermal degradation test, that is, incubate the protein at 37°C for 48h, and no obvious degradation and precipitation were observed. (Referring from China Biological Products Standard, which was calculated by the Arrhenius equation.) The loss of this protein is less than 5% within the expiration date under appropriate storage condition.

[SEQUENCES]

The target protein is fused with two N-terminal Tags, His-tag and GST-tag, its sequence is listed below.

MSPILGYWKI KGLVQPTRL L LEYLEEKYEE HLYERDEGDK WRNKKFELGL EFPNLPYYID
GDVKLTQSMA IIRYIADKHN MLGGCPKERA EISMLEGAVL DIRYGVSRIA YSKDFETLKV
DFLSKLP EML KMFEDRLCHK TYLNGDHVTH PDFMLYDALD VVLYMDPMCL DAFPKLVCFK
KRIEAI PQID KYLKSSKYIA WPLQG WQATF GGGDHPPKSD GSTSGSGHHH HHSAGLVPR
G S T A I G M K E T A A A K F E R Q H M D S P D L G T L E V L F Q G P L G S E F - S K I K P E V T S P K E
RAERDISMVV SGLTPKEVMI VQKFAEKYRL ALTDVITEET THVIKTD AE FVCERTLKYF
LGIAGGKWIV SYSWVIKSIQ ERKLLSVHEF EVKGDVVTGS NHQGPRRSRE SQEKLFEGLQ
IYCCEPFTNM PKDELERMLQ LCGASVVKEL PLLTRDTGAH PIVLVQPSAW TEDNDCPDIG
QLCKGRLVMW DWVLD SISVY RCRDL DAYLV QNITCGRDGS E