



TEL:4006-871-227 Web:www.ybio.net Email:shybio@126.com

YBF859Hu01 100µg
Recombinant Secretogranin II (SCG2)
Organism Species: Homo sapiens (Human)
Instruction manual

FOR IN VITRO USE AND RESEARCH USE ONLY
NOT FOR USE IN CLINICAL DIAGNOSTIC PROCEDURES

11th Edition (Revised in May, 2016)

[PROPERTIES]

Source: Prokaryotic expression.

Host: *E. coli*

Residues: Gln31~Met617

Tags: N-terminal His-Tag

Tissue Specificity: Brain.

Purity: >92%

Traits: Freeze-dried powder

Buffer formulation: 20mM Tris, 150mM NaCl, pH8.0, containing 1mM EDTA, 1mM DTT, 0.01% sarcosyl, 5%Trehalose and Proclin300.

Original Concentration: 200ug/mL

Applications: SDS-PAGE; WB; ELISA; IP; CoIP; Reporter Assays; Purification; Amine Reactive Labeling.

(May be suitable for use in other assays to be determined by the end user.)

Predicted isoelectric point: 4.7

Predicted Molecular Mass: 71.5kDa

Accurate Molecular Mass: 72kDa as determined by SDS-PAGE reducing conditions.

[USAGE]

Reconstitute in 20mM Tris, 150mM NaCl (pH8.0) to a concentration of 0.1-1.0 mg/mL. Do not vortex.



[STORAGE AND STABILITY]

Storage: Avoid repeated freeze/thaw cycles.

Store at 2-8°C for one month.

Aliquot and store at -80°C for 12 months.

Stability Test: The thermal stability is described by the loss rate. The loss rate was determined by accelerated thermal degradation test, that is, incubate the protein at 37°C for 48h, and no obvious degradation and precipitation were observed. The loss rate is less than 5% within the expiration date under appropriate storage condition.

[SEQUENCE]

```
-----  
QRNQLLQKEP DLRLNVQKF  
PSPMIRALE YIENLRQQAH KEESSPDYNP YQGVSVPLQQ KENGDESHLP  
ERDSLSEEDW MRIILEALRQ AENEPQSAPK ENKPYALNSE KNFPMDMSDD  
YETQQWPERK LKHMQFPPMY EENS RDNPFK RTNEIVEEQY TPQSLATLES  
VFQELGKLTG PNNQKRERMD EEQKLYTDDE DDIYKANNIA YEDVVGEDW  
NPVEEKIESQ TQEEVRDSKE NIEKNEQIND EMKRSGQLGI QEEDLRKESK  
DQLSDDVSKV IAYLKRLVNA AGSGRLQNGQ NGERATRLFE KPLDSQSIYQ  
LIEISRNLQI PPEDLIEMLK TGEKPNGSVE PERELDLPVD LDDISEADLD  
HPDLFQNRML SKSGYPKTPG RAGTEALPDG LSVEDILNLL GMESAAQKT  
SYFPNPYNQE KVLPRLPYGA GRSRSNQLPK AAWIPHVENR QMAYENLNDK  
DQELGEYLAR MLVKYPEIIN SNQVKRVPGQ GSSEDDLQEE EQIEQAIKEH  
LNQGSSQETD KLAPVSKRFP VGPPKNDTDP NRQYWDEDLL MKVLEYLNQE  
KAKEGREHIA KRAMENM
```



TEL:4006-871-

227 Web:www.ybio.net Email:

shybio@126.com

[IDENTIFICATION]

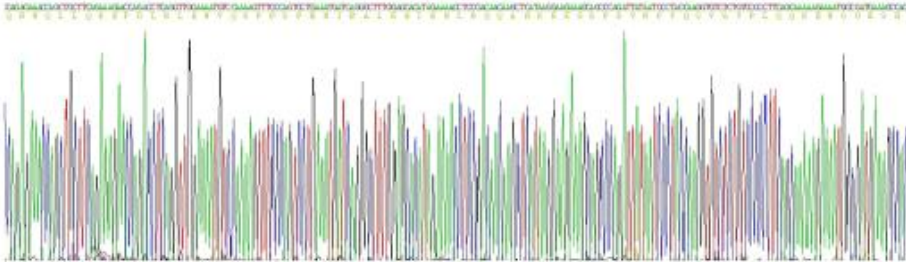


Figure 1. Gene Sequencing (Extract)

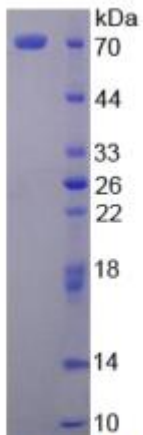


Figure 2. SDS-PAGE