



TEL:4006-871-227 Web:www.ybio.net Email:shybio@126.com

YBD004Hu01 100 $\mu$ g

Recombinant Isoleucyl tRNA Synthetase (IARS)

Organism Species: Homo sapiens (Human)

*Instruction manual*

FOR IN VITRO USE AND RESEARCH USE ONLY

NOT FOR USE IN CLINICAL DIAGNOSTIC PROCEDURES

10th Edition (Revised in Jan, 2014)

## [ PROPERTIES ]

Residues: Met1~Arg500

Tags: Two N-terminal Tags, His-tag and T7-tag

Accession: P41252

Host: *E. coli*

Subcellular Location: Cytoplasm.

Purity: >95%

Endotoxin Level: <1.0EU per 1 $\mu$ g (determined by the LAL method).

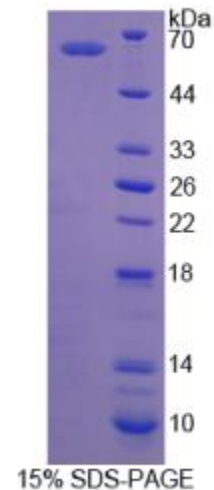
Formulation: Supplied as lyophilized form in PBS, pH7.4, containing 5% trehalose, 0.01% sarcosyl.

Predicted isoelectric point: 5.6

Predicted Molecular Mass: 61.7kDa

Applications: SDS-PAGE; WB; ELISA; IP.

(May be suitable for use in other assays to be determined by the end user.)



## [ USAGE ]



Reconstitute in sterile PBS, pH7.2-pH7.4.

## [ STORAGE AND STABILITY ]

Storage: Avoid repeated freeze/thaw cycles.

Store at 2-8°C for one month.

Aliquot and store at -80°C for 12 months.

Stability Test: The thermal stability is described by the loss rate of the target protein. The loss rate was determined by accelerated thermal degradation test, that is, incubate the protein at 37°C for 48h, and no obvious degradation and precipitation were observed. (Referring from China Biological Products Standard, which was calculated by the Arrhenius equation.) The loss of this protein is less than 5% within the expiration date under appropriate storage condition.

## [ SEQUENCES ]

The sequence of the target protein is listed below.

MLQQVPENIN FPAEEKILE FWTEFNCFQE CLKQSKHKPK FTFYDGPPFA TGLPHYGHIL  
AGTIKDIVTR YAHQSGFHVD RRFQWDCHGL PVEYEIDKTL GIRGPEDVAK MGITEYNNQC  
R A I V M R Y S A E W K S T V S R L G R W I D F D N D Y K T L Y P Q F M E S V W W V F K Q L Y D K G  
LVYRGVKVMP FSTACNTPLS NFESHQNYKD VQDPSVFTF PLEEDTVSL VAWTTPWTL  
PSNLAVCVNP EMQYVKIKDV ARGRLILME ARLSALYKLE SDYEILERFP GAYLKGKKYR  
PLFDYFLKCK ENGAFTVLVD NYVKEEEGTG VVHQAPYFGA EDYRVCMDFN IIRKDSL PVC  
PVDASGCFTT EVTDFAGQYV KDADKSIIRT LKEQGRLVA TTFTHSYFPC WRSDTPLIYK  
AV P S W F V R V E N M V D Q L L R N N D L C Y W V P E L V R E K R F G N W L K D A R D W T I S R N  
RYWGTPIPLW VSDDFEEVVC IGSVAELEEL SGAKISDLHR