



TEL:4006-871-227 Web:www.ybio.net Email:shybio@126.com

YBC547Hu01
100µg

Recombinant Inosine Triphosphatase (ITPA)

Organism Species: Homo sapiens (Human)

*Instruction
manual*

FOR IN VITRO USE AND RESEARCH USE ONLY

NOT FOR USE IN CLINICAL DIAGNOSTIC PROCEDURES

10th Edition (Revised in Jan,
2014)

[PROPERTIES]

Residues: Ala3~Arg180

Tags: Two N-terminal Tags, His-tag and T7-tag

Accession: Q9BY32

Host: *E. coli*

Subcellular Location: Cytoplasm.

Purity: >90%

Endotoxin Level: <1.0EU per 1µg (determined by the LAL method).

Formulation: Supplied as lyophilized form in PBS pH7.4, containing 5% trehalose, 0.01% sarcosyl.

Predicted isoelectric point: 6.2

Predicted Molecular Mass: 23.4kDa

Accurate Molecular Mass: 27kDa as determined by SDS-PAGE reducing

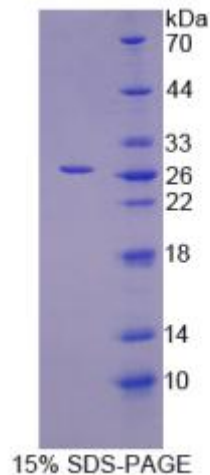
The possible reasons that the actual band size differs from the predicted are as follows:
conditions.

Applications: SDS-PAGE; WB; ELISA; IP.

(May be suitable for use in other assays to be determined by the end user.)

Note:

1. Splice variants: Alternative splicing may create different sized proteins from the same gene.
2. Relative charge: The composition of amino acids may affects the charge of the protein.





TEL:4006-871-227 Web:www.ybio.net Email:shybio@126.com

3. Post-translational modification: Phosphorylation, glycosylation, methylation etc.
4. Post-translation cleavage: Many proteins are synthesized as pro-proteins, and then cleaved to give the active form.
5. Polymerization of the target protein: Dimerization, multimerization etc.

[USAGE]

Reconstitute in sterile PBS, pH7.2-pH7.4.

[STORAGE AND STABILITY]

Storage: Avoid repeated freeze/thaw cycles.

Store at 2-8°C for one month.

Aliquot and store at -80°C for 12 months.

Stability Test: The thermal stability is described by the loss rate of the target protein. The loss rate was determined by accelerated thermal degradation test, that is, incubate the protein at 37°C for 48h, and no obvious degradation and precipitation were observed. (Referring from China Biological Products Standard, which was calculated by the Arrhenius equation.) The loss of this protein is less than 5% within the expiration date under appropriate storage condition.

[SEQUENCES]

The sequence of the target protein is listed below.

ASLVGKKI VFVTGNAKKL EEVVQILGDK FPCTLVAQKI DLPEYQGEPD EISIQKCQEA
VRQVQGPVLV EDTCLCFNAL GGLPGPYIKW FLEKLP EGL HQLLAGFEDK SAYALCTFAL
STGDPSQPVRLFRGR TSGRIVAPRGCQDFGWDPCFPDGYEQTYAEMPKA
EKNAVSHRFR