



TEL:4006-871-227 Web:www.ybio.net Email:shybio@126.com

**YBB312Mu01 50 $\mu$ g**  
**Recombinant Secretory Leukocyte Peptidase Inhibitor (SLPI)**  
**Organism Species: *Mus musculus* (Mouse)**  
***Instruction manual***

FOR IN VITRO USE AND RESEARCH USE ONLY  
NOT FOR USE IN CLINICAL DIAGNOSTIC PROCEDURES

10th Edition (Revised in Jan, 2014)

**[ PROPERTIES ]**

**Residues:** Pro20~Met131

**Tags:** Two N-terminal Tags, His-tag and S-tag

**Accession:** P97430

**Host:** *E. coli*

**Subcellular Location:** Secreted.

**Purity:** >95%

**Endotoxin Level:** <1.0EU per 1 $\mu$ g

(determined by the LAL method).

**Formulation:** Supplied as lyophilized form in 10mM PBS, pH7.4, containing 1mM DTT, 5% trehalose, 0.01% sarcosyl and preservative.

**Predicted isoelectric point:** 8.7

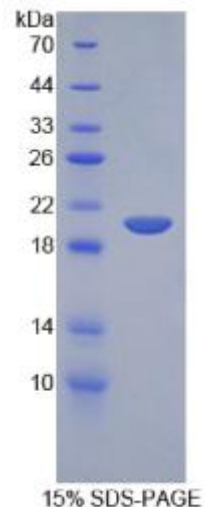
**Predicted Molecular Mass:** 18.1kDa

**Applications:** SDS-PAGE; WB; ELISA; IP.

(May be suitable for use in other assays to be determined by the end user.)

**[ USAGE ]**

Reconstitute in sterile ddH<sub>2</sub>O.





TEL:4006-871-227 Web:www.ybio.net Email:shybio@126.com

## **[ STORAGE AND STABILITY ]**

**Storage: Avoid repeated freeze/thaw cycles.**

Store at 2-8°C for one month.

Aliquot and store at -80°C for 12 months.

**Stability Test:** The thermal stability is described by the loss rate of the target protein. The loss rate was determined by accelerated thermal degradation test, that is, incubate the protein at 37°C for 48h, and no obvious degradation and precipitation were observed. (Referring from China Biological Products Standard, which was calculated by the Arrhenius equation.) The loss of this protein is less than 5% within the expiration date under appropriate storage condition.

## **[ SEQUENCES ]**

The sequence of the target protein is listed below.

P W TVEGGKND A IKIGACPAKK PAQCLKLEKP QCRTDW ECPG KQRCCQDACG  
SKCVNPVPIR KPVW RKPGR C VKTQARCMML NPPNVCQRDG QCDGKYKCCE  
GICGKVCLPP M

## **[ REFERENCES ]**

1. Jin F.-Y., *et al.* (1997) Cell 88:417-426.
2. Abe T., *et al.* (1997) Am. J. Respir. Crit. Care Med. 156:1235-1240.
3. Zitnik R.J., *et al.* (1997) Biochem. Biophys. Res. Commun. 232:687-697.
4. Qian L., *et al.* (2011) J. Immunol. 186:4443-4454.