



TEL:4006-871-227 Web:www.ybio.net Email:shybio@126.com

YBB853Mu01 100µg
Recombinant Matrix Metalloproteinase 19 (MMP19)
Organism Species: Mus musculus (Mouse)

Instruction manual

FOR IN VITRO USE AND RESEARCH USE ONLY
NOT FOR USE IN CLINICAL DIAGNOSTIC PROCEDURES

10th Edition (Revised in Jan, 2014)

[PROPERTIES]

Residues: Tyr99~Asp512

Tags: Two N-terminal Tags, His-tag and T7-tag

Accession: Q9JHI0

Host: *E. coli*

**Subcellular Location: Cell membrane. Lipid-anchor.
GPI-anchor. Extracellular side. Secreted, extracellular
space, extracellular matrix.**

Purity: >95%

**Endotoxin Level: <1.0EU per 1µg (determined by the
LAL method).**

**Formulation: Supplied as lyophilized form in PBS,
pH7.4, containing 5% trehalose, 0.01% sarcosyl.**

Predicted isoelectric point: 8.9

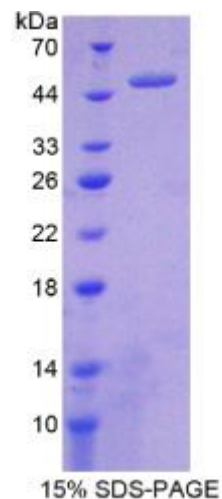
Predicted Molecular Mass: 50.3kDa

Applications: SDS-PAGE; WB; ELISA; IP.

(May be suitable for use in other assays to be determined by the end user.)

[USAGE]

Reconstitute in sterile PBS, pH7.2-pH7.4.





[STORAGE AND STABILITY]

Storage: Avoid repeated freeze/thaw cycles.

Store at 2-8°C for one month.

Aliquot and store at -80°C for 12 months.

Stability Test: The thermal stability is described by the loss rate of the target protein. The loss rate was determined by accelerated thermal degradation test, that is, incubate the protein at 37°C for 48h, and no obvious degradation and precipitation were observed. (Referring from China Biological Products Standard, which was calculated by the Arrhenius equation.) The loss of this protein is less than 5% within the expiration date under appropriate storage condition.

[SEQUENCES]

The sequence of the target protein is listed below.

YL LLGHWRKKNL TFRIFNVPST LSLPRVRAAL HQAFKYWSSV APLTFREVKA GWADIRLSFH
GRQSLYCSNT FDGPGKVLAH ADIPELGSIH FDKDELWTEG TYQGVNLR II AAHEVGHALG
LGHSRYTQAL MAPVYAGYQP FFKLHPDDVA GIQALYGKRS PETRDEEEET EMLTVSPVTA
KPGPMPNPCSGEVDAMVLGPRGKTYAFKGDYVWTVTDSGGPLFQISALW
EGLPGNLDA AVYSPRTRRTHFFKGNKVWRYVDFKMSPGFPMKFNRVEPNL
DAALYWPVNQKVFLFKGSGYWQWDELARTDLSRYPKPIKELFTGVPDRPS
AA MSWQDGQVYFFK GKKEYWRLN QQLRVA KGYP RNTTHW MHCGS QTPD TNS
STGDVTPSTT DTVLGTTTST MGSTLDIPSA TD