



TEL:4006-871-227 Web:www.ybio.net Email:shybio@126.com

YBD226Hu01 100 $\mu$ g

Recombinant Lipase, Gastric (LIPF)

Organism Species: Homo sapiens (Human)

*Instruction manual*

FOR IN VITRO USE AND RESEARCH USE ONLY

NOT FOR USE IN CLINICAL DIAGNOSTIC PROCEDURES

10th Edition (Revised in Jan, 2014)

## [ PROPERTIES ]

Residues: Leu20~Lys398

Tags: Two N-terminal Tags, His-tag and GST-tag

Accession: P07098

Host: *E. coli*

Subcellular Location: Secreted.

Purity: >95%

Endotoxin Level: <1.0EU per 1 $\mu$ g (determined by the LAL method).

Formulation: Supplied as lyophilized form in PBS, pH7.4, containing 5% trehalose, 0.01% sarcosyl.

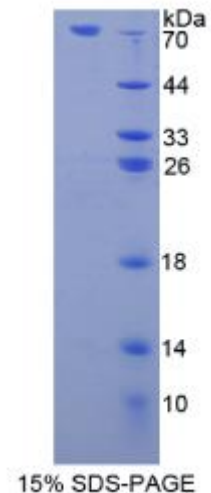
Predicted isoelectric point: 6.9

Predicted Molecular Mass: 73.2kDa

Applications: SDS-PAGE; WB; ELISA; IP.

(May be suitable for use in other assays to be determined by the end user.)

## [ USAGE ]





Reconstitute in sterile PBS, pH7.2-pH7.4.

## [ STORAGE AND STABILITY ]

Storage: Avoid repeated freeze/thaw cycles.

Store at 2-8°C for one month.

Aliquot and store at -80°C for 12 months.

Stability Test: The thermal stability is described by the loss rate of the target protein. The loss rate was determined by accelerated thermal degradation test, that is, incubate the protein at 37°C for 48h, and no obvious degradation and precipitation were observed. (Referring from China Biological Products Standard, which was calculated by the Arrhenius equation.) The loss of this protein is less than 5% within the expiration date under appropriate storage condition.

## [ SEQUENCES ]

The sequence of the target protein is listed below.

L FGKLHPGSPE VTMNISQMIT YWGYPNEEYE VVTEDGYILE VNRIPYGKKN SGNTGQRPVV  
FLQHGLLASA TNWISNLPNN SLAFILADAG YDVWLGNSRG NTWARRNLYY SPDSVEFWAF  
SFDEMAKYDL PATIDFIVKK TGQKQLHYVG HSQGTIGFI AFSTNPSLAK RIKTFYALAP  
VATVKYTKSL INKLRFPQS LFKFIFGDKI FYPHNFFDQF LATEVCSREM LNLLCSNALF  
I I C G F D S K N F N T S R L D V Y L S H N P A G T S V Q N M F H W T Q A V K S G K F Q A Y D W G S  
PVQNRMHYDQ SQPPYYNVTA MNVPIAVWNG GKDLLADPQD VGLLLPKLPN LIYHKEIPFY  
NHLDFIWAMD APQEVYNDIV SMISEDKK