



TEL:4006-871-227 Web:www.ybio.net Email:shybio@126.com

YBA754Mu01 10 μ g

Recombinant Myosin Heavy Chain 1, Skeletal Muscle, Adult (MYH1)

Organism Species: *Mus musculus* (Mouse)

Instruction manual

FOR IN VITRO USE AND RESEARCH USE ONLY
NOT FOR USE IN CLINICAL DIAGNOSTIC PROCEDURES

10th Edition (Revised in Jan, 2014)

[**PROPERTIES**]

Residues: Glu1585~Met1642 linked by RTKY

Tags: Two N-terminal Tags, His-tag and GST-tag

Accession: Q5SX40

Host: *E. coli*

Subcellular Location: Cytoplasm, myofibril.

Purity: >90%

Endotoxin Level: <1.0EU per 1 μ g

(determined by the LAL method).

Formulation: Supplied as lyophilized form in 10mM PBS, pH7.4, containing 1mM DTT, 5% trehalose, 0.01% sarcosyl and preservative.

Predicted isoelectric point: 7.0

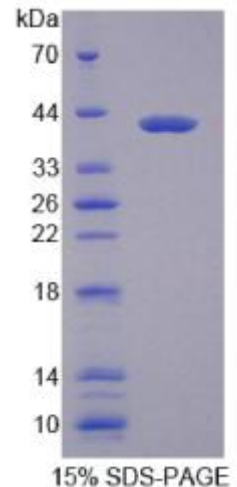
Predicted Molecular Mass: 37.5kDa

Applications: SDS-PAGE; WB; ELISA; IP.

(May be suitable for use in other assays to be determined by the end user.)

[**USAGE**]

Reconstitute in sterile ddH₂O.





TEL:4006-871-227 Web:www.ybio.net Email:shybio@126.com

[STORAGE AND STABILITY]

Storage: Avoid repeated freeze/thaw cycles.

Store at 2-8°C for one month.

Aliquot and store at -80°C for 12 months.

Stability Test: The thermal stability is described by the loss rate of the target protein. The loss rate was determined by accelerated thermal degradation test, that is, incubate the protein at 37°C for 48h, and no obvious degradation and precipitation were observed. (Referring from China Biological Products Standard, which was calculated by the Arrhenius equation.) The loss of this protein is less than 5% within the expiration date under appropriate storage condition.

[SEQUENCES]

The sequence of the target protein is listed below.

RTKY EKDEEI DQLKRNHIRV VESMQSTLDA EIRSRNDAIR LKKKMEGDLN EMEIQLNHSN
RM

[REFERENCES]

1. Church D.M., *et al.* (2009) PLoS Biol. 7:E1000112-E1000112.
2. Huttlin E.L., *et al.* (2010) Cell 143:1174-1189.
3. Weiss A., *et al.* (1999) Proc. Natl. Acad. Sci. U.S.A. 96:2958-2963.
4. Lu B.D., *et al.* (1999) Dev. Biol. 216:312-326.