



TEL:4006-871-227 Web:www.ybio.net Email:shybio@126.com

**YB94348Hu01**

**Solute Carrier Family 3, Member 2 (SLC3A2)**

**Organism: Homo sapiens (Human)**

***Instruction manual***

FOR IN VITRO USE AND RESEARCH USE ONLY

NOT FOR USE IN DIAGNOSTIC OR THERAPEUTIC PROCEDURES

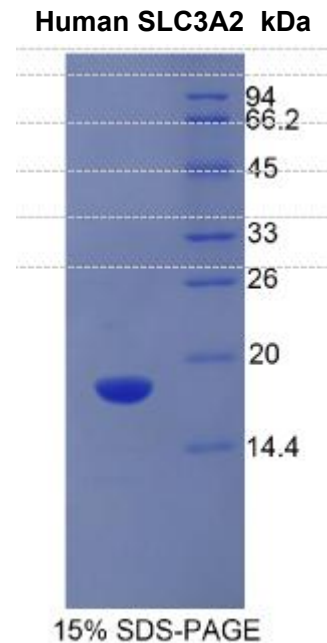
5th Edition (Revised in January, 2013)

**[ DESCRIPTION ]**

**Protein Names:** Solute Carrier Family 3, Member 2

**Synonyms:** SLC3A2, MDU1

**Species:** Human



**Size:** 100µg

**Source:** *Escherichia coli* -derived

**Subcellular Location:** Apical cell membrane;  
Single-pass type II membrane protein. Melanosome.



TEL:4006-871-227 Web:www.ybio.net Email:shybio@126.com

### **[ PROPERTIES ]**

**Residues:** Leu213~Asp349 (Accession # P08195),  
with N-terminal His-Tag.

**Grade & Purity:** >95%, 18kDa as determined by  
SDS-PAGE reducing conditions.

**Formulation:** Supplied as lyophilized form in PBS, pH  
7.4, containing 5% sucrose.

**Endotoxin Level:** <1.0 EU per 1 $\mu$ g (determined by  
the LAL method).

**Applications:** SDS-PAGE; WB; ELISA; IP.

(May be suitable for use in other assays to be determined by the end user.)

**Predicted Molecular Mass:** 16.8kDa

**Predicted isoelectric point:** 7.1



TEL:4006-871-227 Web:www.ybio.net Email:shybio@126.com

### **[ PREPARATION ]**

Reconstitute in sterile PBS, pH7.2-pH7.4.

### **[ STORAGE AND STABILITY ]**

**Storage: Avoid repeated freeze/thaw cycles.**

Store at 2-8°C for one month.

Aliquot and store at -80°C for 12 months.

**Stability Test:** The thermal stability is described by the loss rate of the target protein. The loss rate was determined by accelerated thermal degradation test, that is, incubate the protein at 37°C for 48h, and no obvious degradation and precipitation were observed. (Referring from China Biological Products Standard, which was calculated by the Arrhenius equation.) The loss of this protein is less than 5% within the expiration date under appropriate storage condition.

### **[ SEQUENCES ]**

The target protein is fused with N-terminal His-Tag, its sequence is listed below.

MGHHHHHSGSEF-LPAQKWWH TGALYRIGDL QAFQGHGAGN LAGLKGRLDY  
LSSLKVKGLV LGPIHKNQKD DVAQTDLLQI DPNFGSKEDF DSSLQSAKKK SIRVILDLT  
NYRGENSWFS TQVDTVATKV KDALEFWLQA GVDGFQVRD