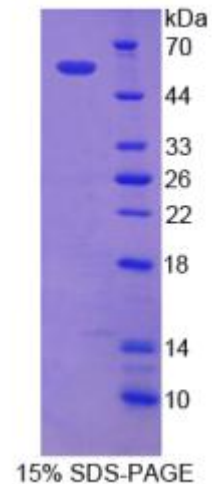


**YBC239Hu01 100µg****Recombinant Thyroid Hormone Receptor Alpha (THRα)****Organism Species: Homo sapiens (Human)*****Instruction manual*****FOR IN VITRO USE AND RESEARCH USE ONLY****NOT FOR USE IN CLINICAL DIAGNOSTIC PROCEDURES**

10th Edition (Revised in Jan, 2014)

**[ PROPERTIES ]****Residues: Met1~Pro490****Tags: Two N-terminal Tags, His-tag and T7-tag****Accession: P10827****Host: *E. coli*****Subcellular Location: Nucleus.****Purity: >95%****Endotoxin Level: <1.0EU per 1µg (determined by the LAL method).****Formulation: Supplied as lyophilized form in PBS, pH7.4 containing 5% trehalose, 0.01% sarcosyl.****Predicted isoelectric point: 6.4****Predicted Molecular Mass: 58.5kDa****Applications: SDS-PAGE; WB; ELISA; IP.****(May be suitable for use in other assays to be determined by the end user.)****[ USAGE ]****Reconstitute in sterile PBS, pH7.2-pH7.4.**



## **[ STORAGE AND STABILITY ]**

**Storage: Avoid repeated freeze/thaw cycles.**

**Store at 2-8°C for one month.**

**Aliquot and store at -80°C for 12 months.**

**Stability Test: The thermal stability is described by the loss rate of the target protein. The loss rate was determined by accelerated thermal degradation test, that is, incubate the protein at 37°C for 48h, and no obvious degradation and precipitation were observed. (Referring from China Biological Products Standard, which was calculated by the Arrhenius equation.) The loss of this protein is less than 5% within the expiration date under appropriate storage condition.**

## **[ SEQUENCES ]**

**The sequence of the target protein is listed below.**

**MEQKPSKVECGSDPEENSARSPDGKRKRKNGQC SLKTSMSGYIPSYLDKD  
EQCVVCGDKA TGYHYRCITC EGCKGFFRRT IQKNLHPTYS CKYDSCCVID KITRNQCQLC  
RFKKCIAVGM AMDLVLDDSK RVAKRKLEIQ NRERRRKEEM IRSLQQRPEP TPEEWDLIHI  
ATEAHRSTNA QGSHWKQRRK FLPDDIGQSP IVSMPDGDKV DLEAFSEFTK IITPAITRVV  
DFAKKLPMFS ELPCEDQIIL LKGCCMEIMS LRAAVRYDPE SDTLTSGEM AVKREQLKNG  
GLGVVSDAIF ELGKSLSAFN LDDTEVALLQ AVLLMSTDRS GLLCVDKIEK SQEAYLLAFE  
HYVNRKHNIPHFWPKLLMKEREVQSSILYKGA AEGRP GGS LGVHPEGQ  
QLLGMHV VQGPQVRQLEQQLGEAGSLQGPVLQH QSPKSPQQRLLELLHRS  
GILHARAVCG EDDSSEADSP SSSEEEPEVC EDLAGNAASP**