



TEL:4006-871-227 Web:www.ybio.net Email:shybio@126.com

YBA854Mu01 100µg
Recombinant Glutamyl Aminopeptidase (GluAP)
Organism Species: Mus musculus (Mouse)

Instruction manual

FOR IN VITRO USE AND RESEARCH USE ONLY
NOT FOR USE IN CLINICAL DIAGNOSTIC PROCEDURES

10th Edition (Revised in Jan, 2014)

[PROPERTIES]

Residues: Asp75~Gly296

Tags: Two N-terminal Tags, His-tag and GST-tag

Accession: P16406

Host: *E. coli*

**Subcellular Location: Membrane; Single-pass
type II membrane protein.**

Purity: >95%

**Endotoxin Level: <1.0EU per 1µg (determined by the
LAL method).**

**Formulation: Supplied as lyophilized form in PBS,
pH7.4, containing 5% trehalose, 0.01% sarcosyl.**

Predicted isoelectric point: 6.6

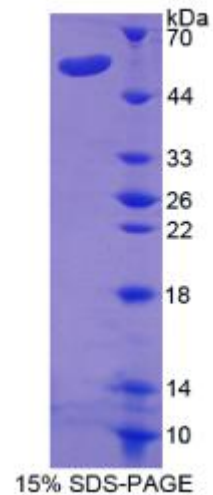
Predicted Molecular Mass: 56.0kDa

Applications: SDS-PAGE; WB; ELISA; IP.

(May be suitable for use in other assays to be determined by the end user.)

[USAGE]

Reconstitute in sterile PBS, pH7.2-pH7.4.





[STORAGE AND STABILITY]

Storage: Avoid repeated freeze/thaw cycles.

Store at 2-8°C for one month.

Aliquot and store at -80°C for 12 months.

Stability Test: The thermal stability is described by the loss rate of the target protein. The loss rate was determined by accelerated thermal degradation test, that is, incubate the protein at 37°C for 48h, and no obvious degradation and precipitation were observed. (Referring from China Biological Products Standard, which was calculated by the Arrhenius equation.) The loss of this protein is less than 5% within the expiration date under appropriate storage condition.

[SEQUENCES]

The sequence of the target protein is listed below.

**DESGEW KNFRLPDFIN PVHYDLEVKA LMEEDRYTGI VTISVNL SKP TRDLWLHIRE
TKITKLPELR RPSGEQVPIR RCFEYKKQEY VVIQAAEDLA ATSGDSVYRL TMEFKGWLNG
SLVGFYKTTY MEDGQIR SIA ATDHEPTDAR KSFPCFDEPN KKSTYSISII HPKEYSALS N
MPEEKSEMVD DNWKKTT FVK SVPMSTYLVC FAVHRFTAIE RKSRSG**