



TEL:4006-871-227 Web:www.ybio.net Email:shybio@126.com

YBA655Ra01 100µg
Recombinant Calcium/Calmodulin Dependent
Protein Kinase II Gamma (CAMK2g)
Organism Species: Rattus norvegicus (Rat)
Instruction manual

FOR IN VITRO USE AND RESEARCH USE ONLY
NOT FOR USE IN CLINICAL DIAGNOSTIC PROCEDURES

10th Edition (Revised in Jan, 2014)

[PROPERTIES]

Residues: Tyr14~Lys301

Tags: Two N-terminal Tags, His-tag and T7-tag

Accession: P11730

Host: *E. coli*

**Subcellular Location: Sarcoplasmic reticulum
membrane, Peripheral membrane protein,
Cytoplasmic side Inferred.**

Purity: >95%

**Endotoxin Level: <1.0EU per 1µg (determined by the LAL
method).**

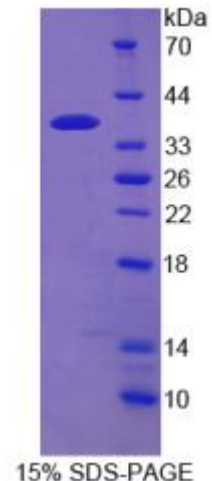
**Formulation: Supplied as lyophilized form in PBS, pH7.4,
containing 5% trehalose, 0.01% sarcosyl.**

Predicted isoelectric point: 8.1

Predicted Molecular Mass: 36.7kDa

Applications: SDS-PAGE; WB; ELISA; IP.

(May be suitable for use in other assays to be determined by the end user.)



[USAGE]

Reconstitute in sterile PBS, pH7.2-pH7.4.



[STORAGE AND STABILITY]

Storage: Avoid repeated freeze/thaw cycles.

Store at 2-8°C for one month.

Aliquot and store at -80°C for 12 months.

Stability Test: The thermal stability is described by the loss rate of the target protein. The loss rate was determined by accelerated thermal degradation test, that is, incubate the protein at 37°C for 48h, and no obvious degradation and precipitation were observed. (Referring from China Biological Products Standard, which was calculated by the Arrhenius equation.) The loss of this protein is less than 5% within the expiration date under appropriate storage condition.

[SEQUENCES]

The sequence of the target protein is listed below.

**YQLFEEL GKGAFSVVRR CVKKTSTQEY AAKIINTKKL SARDHQKLER EARICRLLKH
PNIVRLHDSI SEEGFHLYLVF DLVTGGELFE DIVAREYYSE ADASHCIHQI LESVNHIIQH
DIVHRDLKPE NLLASKCKG AAVKLADFGI AIEVQGEQQA WFGFAGTPGY LSPEVLRKDP
YGKPVDIWAC GVILYILLVG YPPFWDEDQH KLYQQIKAGA YDFPSPEWDT VTPEAKNLIN
QMLTINPAKR ITADQALKHP WVCQRSTVAS MMHRQETVEC LRKFNARRKL K**